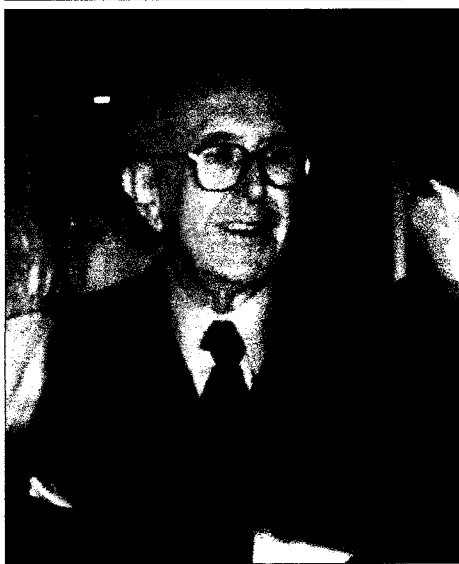




2003 Keynote Speaker Cesar Pelli



H. Takeda

AIA Gold Medallist Cesar Pelli FAIA presented his lecture as the 2003 AIA London/UK Keynote Speaker to a capacity audience on the 20th November 2003. The venue was the Wintergarden at Canary Wharf, recently completed by Cesar Pelli and Associates Architects of New Haven, Connecticut.

The lecture began with an overview of the evolution and continuing development of Canary Wharf – photos p 3. His firm designed the master plan, the anchor high-rise One Canada Square, and have subsequently designed many further office buildings, including the Citigroup Tower. Mr Pelli complimented the Canary Wharf Corporation as being an excellent and enlightened client in developing a project of this scale and on such a high level of quality. He noted that as more businesses are occupy-

ing the Wharf there is more social life that animate the public spaces. With improvements to the public transport system through Canary Wharf, development of residential component and cultural venues, network links with the principal sectors of Greater London, Canary Wharf has increasingly become a dynamic place to be in the European scene. Mr Pelli then discussed current and recent work of his practice that includes a surprising number of performing and visual arts centres. These include projects in California, Minnesota, Washington, and Ohio; overseas in Japan, Malaysia and Spain amongst other locations. For those that are only familiar with his office building work, these more complex building types allowed Pelli to develop a greater richness, breadth and diversity of design.

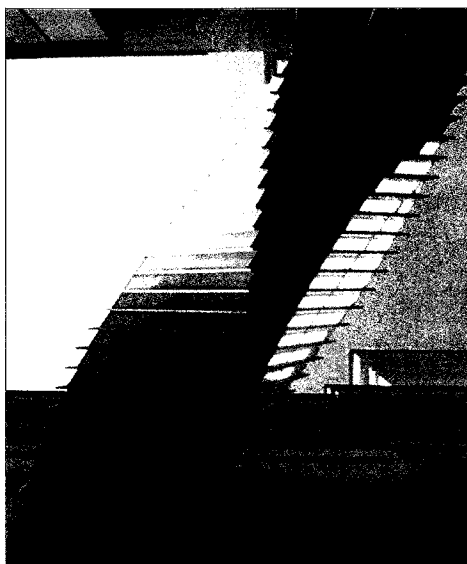
– continue to p 2 –

2004 Design Excellence Awards Gala

The ceremony for the 10th anniversary Chapter Excellence in Design Awards of the American Institute of Architects London/UK Chapter took place on Thursday 12th February 2004 at the Royal Society of Arts Covent Garden, London.

The well-attended ceremony formed the conclusion to this popular awards program that celebrates and promotes excellence in architectural design across the world, organised by RTKL-UK Limited Architects and, again this year, under the generous sponsorship of MACE Limited.

The ceremony began with a brief introduction from the incoming President of the AIA London/UK Chapter, Michael Hardiman AIA, who then introduced Bob White RIBA Professional Affiliate AIA, the Chief



Nick Wood - photo - Bridge of Aspiration

Executive Officer of MACE Limited to the podium, who spoke of the current thriving building industry, which has learned from past mistakes to achieve improved results.

Members of the Jury chaired by Professor Murray Fraser RIBA of the University of Westminster included Peter Barber RIBA of Peter Barber Architects, Professor David Dunster RIBA of the University of Liverpool, Kathryn Findlay RIBA of Ushida Findlay Architects, John Gosling RIBA AICP of RTKL-UK Limited and Niall McLaughlin RIBA FRIAI of Niall McLaughlin Architects

Commenting on the award winning schemes Murray Fraser noted that “The standard of the entries received this year was consistently high and each of the winning projects exhibit design excellence

– continue to p 3 –

2003 Annual Design Charrette

From shortly past dawn on Saturday 18th October 2003 pencils and pens could be heard gliding across tracing paper, laptops opening-up and model kits rustling, the 9th Annual AIA London/UK Student-Professional Design Charrette was underway.

This year’s focus was the river Thames – “Aflorat on the Thames” – the great connector and divider of London – to design a public space on, at or in the river - asked the design teams to consider historical references, the rising water table in London and events that might take place in the near future, such as the Olympics, along the waterfront bounded by London Bridge to the west and Tower Bridge to the east. The design could be anything that is “floating”.

From the London City Hall, the venue provid-

ed courtesy of the Greater London Authority, the river could be seen from the Charrette “studio” in the new icon landmark building by Foster & Partners Architects, glittering in the sun, as could Tower Bridge, the skyline of the City and the illusionist David Blaine in his plexiglass box that weekend. It was an ideal set-up for the Event.

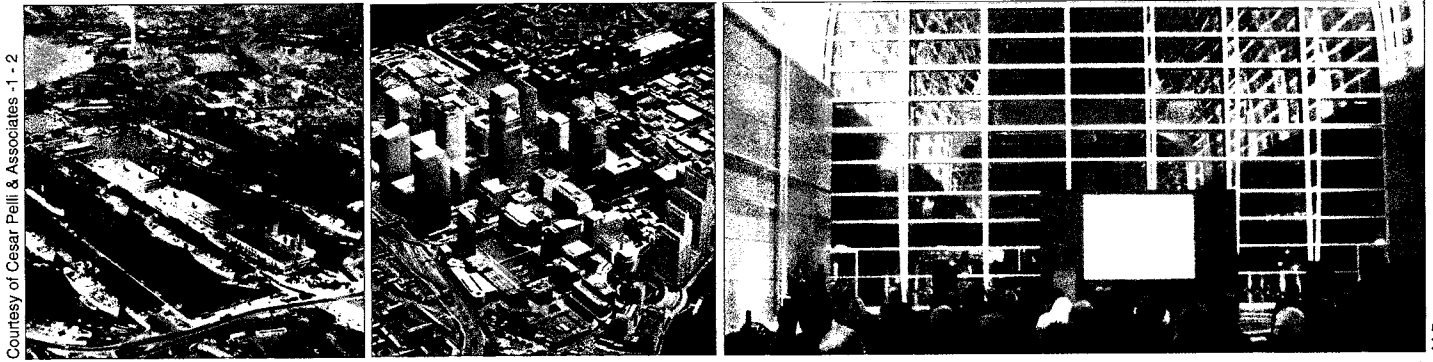
Approximately 70 students and professional architects competed in the 2003 Charrette, who were organised into nine (9) teams. Universities across the United Kingdom from Edinburgh, Bristol, Newcastle and Manchester to Southern England were represented, as well as the University of Munich in Germany.

The entries for the Jury at the end of the day included drawings, models and one video. Then the Jury began the – continue to p 5 –



B Sennewald & Courtesy of 2004 Charrette Team: London Links

Keynote Speaker



Courtesy of Cesar Pelli & Associates - 1 - 2

M Deguzman

The Canary Wharf site prior the commencement of development in 1981 - photo left. Post 2004 development scale model currently planned and on the boards. Keynote Speaker Cesar Pelli presenting to capacity audience at the Canary Wharf Wintergarden on 21st November 2003.



H. Takeda

– continued from p 1 –
Comparable and notable example is the redevelopment master plan of Bilbao, Spain by the Pelli firm—photo 1 left below.

Also on the boards was an extraordinary museum project in Osaka. This subterranean design features a vaulted tubular metal canopy that would make the younger generation of expressionist architects jealous.

Construction photos gave a sense of the scale and vision of this project – photo 2 left below.

During the post Lecture dinner, Mr. Pelli made an impromptu thumbnail pencil sketch on a hotel memo pad of the world icon Petronas Towers, Nom Peng., Malaysia on request to the delight of the guests at the table – copy below.

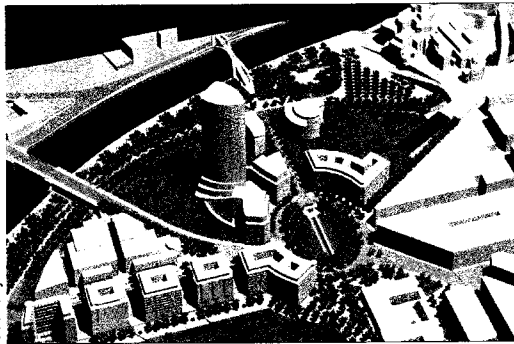
The Chapter is grateful to the Canary Wharf Corporation for allowing the use of all of the necessary facilities of the Wintergarden, including security guards, allowing the audience to

enjoy the evening with a peace of mind.

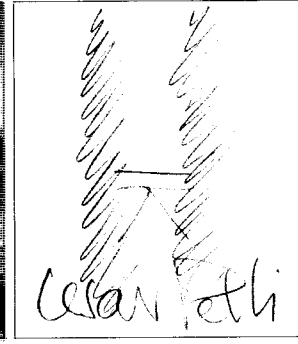
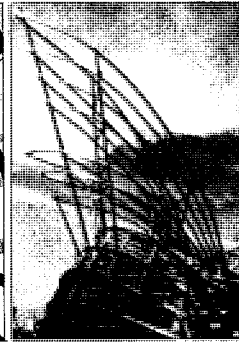
The 2003 Keynote Speaker event was co-sponsored by the German cladding manufacturer Gebrüder Schneider Fensterfabrik GmbH & Co, who have since become a corporate sponsor of AIA London/UK.

Lawrence Ng AIA, Associate Principal of Cesar Pelli & Associates accompanied Mr. Pelli to oversee the presentation of the Keynote Speaker – photo left. Lester Korzilius AIA RIBA, AIA London/UK 2003

President and M. J. Long AIA RIBA, Director, in charge of 2003 Keynote Speaker – photo below.

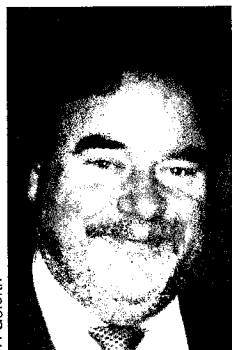


Courtesy of Cesar Pelli & Associates - 1 - 2 & 3



M Deguzman

Paul Finch AIA London/UK Honorary Member



H. Goforth

Accompanied by thunderous applause at the AIA London/UK Chapter Annual Design Excellence Awards Ceremony on 12th February 2004, the Chapter President Michael Hardiman AIA presented an Honorary Membership of the

Chapter to Paul Finch, OBE Hon FRIBA for serving during the last four consecutive years as Chairman of the Jury for the Chapter's Annual Student-Professional Design Charrette, which takes place in November, each year. He brings focus, insight, leadership, a great pace, and a great deal of humour to the critique of each team's scheme during the charrette.

The Chapter by presenting this token, showed

its appreciation and prospect of sharing his enthusiasm and expertise with the Chapter.

Paul Finch is a household name in the fields of architecture and building construction in the UK. As a highly respected writers, he is also an astute and outspoken critic and a catalyst to fresh ideas, often challenging controversial issues in the environmental and building industry. He continues to contribute to a wide range of forums as a commentator on architecture and design, so members of the Chapter have become well acquainted and familiar with his astute views on issues in construction industry.

He was born in London and attended Selwyn College at Cambridge University, graduating with a degree in history.

His career portfolio includes: News editor, Building Design, 1973-76. Deputy editor, Estates Times, 1976-83. Editor, Building Design, 1983-94. Editor, the Architects'

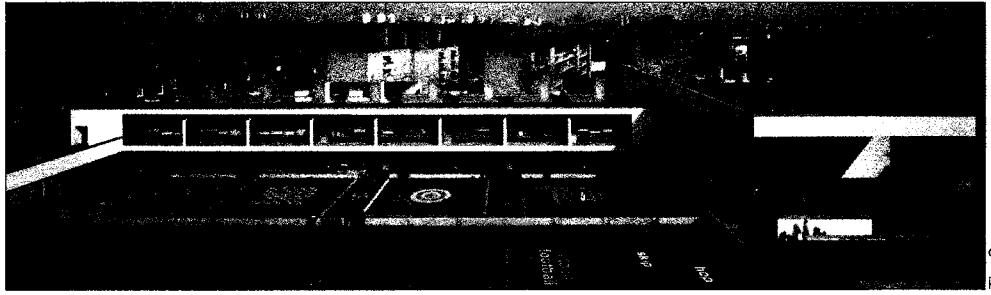
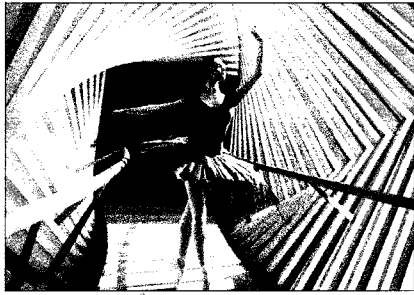
Journal, 1994-1999, its publishing director, 1999-2002. He is a former member of the DETR (Department of Environment Trade and Environment) Advisory Group for the Greater London Authority Headquarters. He has been honoured by the Queen with an OBE for his service to architectural journalism.

Mr. Finch is currently a Deputy Chairman of CABE, since 2000, and Editorial Director of the publishing group EMAP Construct, which publishes the industry staple of magazines and newspapers such as the Architects Journal, Building Design, amongst other issues, also the Chair of Design Review Committee 1999-2004 and a Joint editor of Planning in London, and has now taken over as Chair of CABE's Regional Committee acting as lead Commissioner on London issues.

We are delighted to welcome Paul Finch as an Honorary Member of the AIA London/UK.



2004 Design Excellence Awards



Peter Cook / New Pictures

Tim Soar

Bridge of Inspiration, Covent Garden, London by Wilkinson Eyre Architects - photos left and p 1 centre. Jubilee School, Tulsa Hill, London by Alford Hall Monaghan Morris Architects - right.

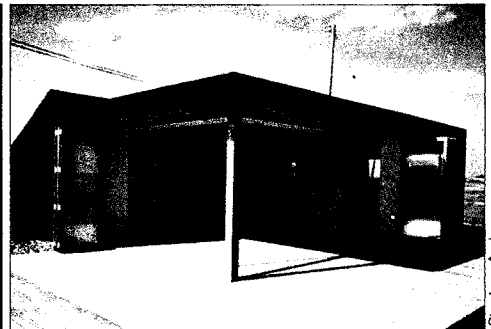
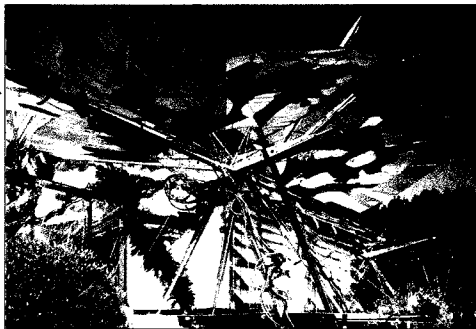
– continued from p 1 – from fine details through to the complete construction.” Amongst the 47 professional entries were projects from as far afield as Tanzania, Hungary, Holland, Spain, Australia and USA. The Jury selected four award winning schemes and one special commendation in the professional category:

Simon Conder Associates for Black Rubber Beach House, Dungeness, Kent; Alford Hall Monaghan Morris for Jubilee School, Tulsa Hill, London; de Rijke Marsh Morgan Architects for No.1 Centaur Street,

London; Wilkinson Eyre Architects for Bridge of Aspiration, Covent Garden, London.

Chetwood Associates received a Highly Commended award for an extraordinary project, the Butterfly House in Dunsfold, Surrey.

Paul Finch, OBE, Honorary FRIBA was presented with an Honorary Membership to AIA London/UK by Michael Hardiman for his inspired support to the Chapter over a number of years – see full honours p 2.



Edmond Sumner - 1 - Alex de Rijke - 2

Stephen Ambrose

Butterfly House, Dunsfold, Surrey by Chetwood Associates Architects. No. 1 Centaur Street, London by de Rijke Marsh Morgan Architects. Black Rubber Beach House, Dungeness, Kent by Simon Conder Associates - left to right.

Many thanks on behalf of the Chapter must go to the Jury members, who gave their expertise and time to create an excellent evening at the prestigious venue of the Royal Society of Arts, especially to Bob White of MACE, Alexander Phillips Assoc AIA and Steven Norris of RTKL-UK for a superb organisation of this year's Awards programme – photos left to right, respectively.



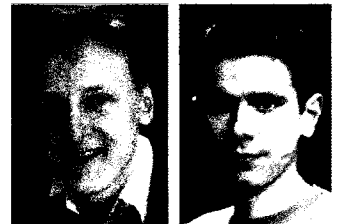
In conclusion, the success of this Awards Gala is a testament to an motivated architectural community of American and European professionals in the field of man-made environmental design and construction, which continues to produce works of exemplary quality that inspire all those who occupy and use

MACE Limited

these buildings with a great deal of satisfaction and pleasure.

In addition to the professional category, up-and-coming architectural talents were celebrated with the presentation of two Awards under the Noel Hill Student Awards programme – see below.

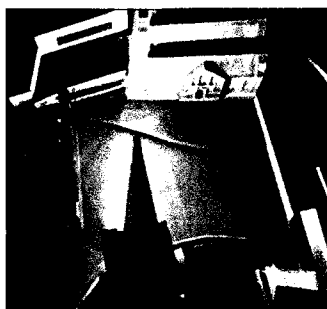
With the continuing efforts from the members of the AIA London/UK Chapter, coupled with the continued desire to strive for design excellence we can look forward to an even wider participation, greater number of entries and success for the 11th Annual 2005 AIA London/UK Excellence in Design Awards programme.



2004 Noel Hill Student Travel Awards

The up-and-coming architectural talent was celebrated with the presentation of two Noel Hill Student Travel Awards to Mr. James Curtis of Oxford Brookes University and Mr. Vijay Patel of De Montfort University Leicester. Students currently enrolled at universities in the United Kingdom undertaking Part 1 or Part 2 level architectural courses were invited to submit a portfolio of their respective studio work for Jury assessment. The Awards Jury bestowed travel bursaries by AIA London/UK to the students with portfolios, which displayed Design Excellence – selected project photos of Patel left & Curtis right.

James Curtis will be making a trip to New Zealand to investigate how the landscape and urban settlements can be viewed at different scales with an analysis of the effect of settlement there on the indigenous environment. Currently working as a year-out student for Perkins &



Courtesy of V Patel - 1 - J Curtis - 2

Will in Chicago, Vijay Patel was unable to attend the ceremony, but his travel proposal is to go to Cuba to study and draw the different urban conditions design challenges in the island country's towns and cities.

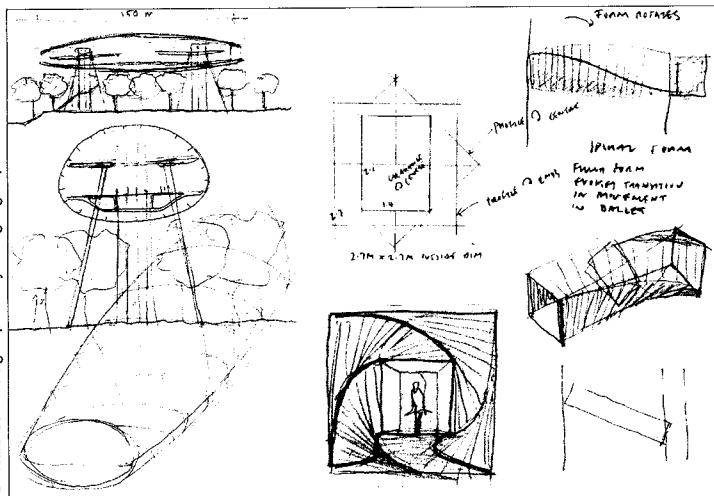
m|a|c|e

Mace Limited

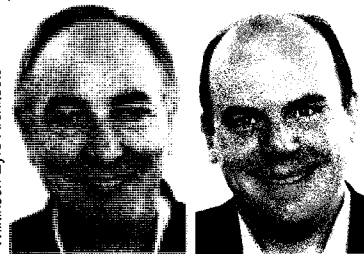
Atelier House • 64 Pratt Street • London NW1 0LF • United Kingdom
telephone 44 (0)20 7554 8000 • fax 44 (0)20 7554 8111 • website www.mace.co.uk

A Corporate Sponsor of AIA London/UK

The Sketch



C Wilkinson - left group - J Eyre - right group



Wilkinson Eyre Architects

The partnership of Chris Wilkinson OBE RIBA and James Eyre OBE RIBA is a prolific creative force in the British arena of environmental design – photos left and right respectively. Winning the prestigious RIBA Stirling Prize in two consecutive years of

2001 and 2002 is unprecedented – the Stratford Station on the London Jubilee Line and an internationally acclaimed Gateshead Millennium Bridge over the River Tyne. Wilkinson Eyre Architects are recipients of 2004 AIA London/UK Excellence in Design Award for another one of their astounding bridge designs – photos p 1 & 2.

It is with great pleasure that we publish a third in the series of signature sketches by illustrious architects to appear in the AIA UK NEWS. In this panel are concept pencil sketches by Messers Wilkinson and Eyre – left and right groups respectively, of the New Crystal Palace and the Bridge of Aspiration that links the ballet studios to the performing stage at the Royal Opera House in Covent Garden, London.

With diverse output, from writing, teaching, cultural projects to developing master plans, their bridge designs are unrivalled. Eyre published, *The Architecture of Bridge Design*; Wilkinson, *Supersheds* and they co-authored *Bridging Art and Science*, among other publications.

They believe in and produce a “well crafted design with an economy of means,” based on engineering principles with a distinctive multi-disciplinary flair. Wilkinson’s teaching venues extend to Harvard GSD, IIT, Chicago, UC, Berkeley, Mackintosh School in Scotland, amongst others. Exhibits of their works continue to go on display around the world. Eyre studied at University of Liverpool and Architectural Association and Wilkinson at Regent Street Polytechnic School of Architecture. Their kudos are too numerous to note. The Queen has honoured each with an OBE for services to architecture.

McGraw-Hill Construction President Norbert Young

Norbert Young Jr, FAIA, President of McGraw Hill Construction met last November with the President and Directors of AIA London/UK, Lester Korzilius AIA RIBA, Harry Goforth Int’l Assoc AIA RIBA and Hiko Takeda AIA RIBA, Editorial Director of AIA UK NEWS. On behalf of the publishers of *Architectural Record*, *Engineering News*



McGraw Hill Construction

Record, *Sweets*, and the *Dodge Reports*, Mr. Young was in the UK for market research regarding potential expansion plans for their interests in Europe as part of their global business strategy.

An interesting conversation led to revelation of some surprising statistics that the domestic US construction market accounts for approximately 25% of the world market in the industry, whereas the UK market represents less than 3% of the world trade. For that reason European suppliers are keen to export to the US. It is

this niche in the construction data services that McGraw Hill is looking to fill. This goes to show that the United States is the dominant importer of construction goods in the global market place. The difficulties faced by the US manufacturers to supply thinly fragmented international market places, like the individual trading country with uniquely different technical requirements within the European Union, makes American exports overseas an unattractive proposition.

On the other hand, China is becoming a major player to reckon with in both contracting and construction trades, and compels the world to consider directing its trading ventures in that direction.

Mr. Young holds a Master of Architecture from the University of Pennsylvania, its Overseer of the Graduate School of Fine Arts, a regent of the American Architectural Foundation, among other affiliations. He spent eight years with Bovis Group and became President of Bovis Manangement System, before joining McGraw-Hill.

Fluidity Water Design Seminar

“art, soul, beauty and humanity, as explored through water design”

I reviewed the conceptual foundations of our water design practice to the AIA London/UK Chapter on 6th November 2003 – including our ideas about nature, water anatomy, symbolism, photomosaics and our design philosophy, which are codified into a diagram we call “The Water Box,” and our recent projects. The most modest is a canted, free-standing water-wall for an art museum in Louisiana – a transformational sculpture

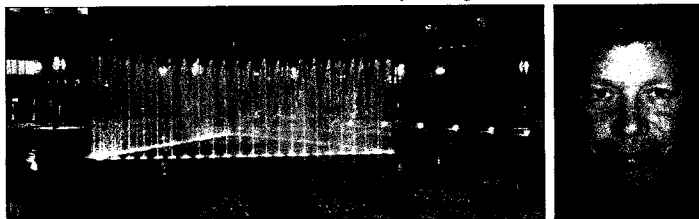


Fluidity Design Consultants Inc. - 1 - 2 & 3

and the most grand is a huge interactive water garden planned for Shanghai, a competition winner with John Portman Architects- photo left. Photo below is an installation for Cesar Pelli designed Pacific Design Center. Current works include with Foster & Partners, Toyo Ito, Raphael Viñoly, Jerde Partnership, SWA and The Olin Partnership.

We are based in Los Angeles and the presentation in the brisk pre-Holiday air in London was refreshing, indeed, and my evening as a guest presenter of fellow Americans working abroad, was a great pleasure, as I cherished their spirit and offer my salute to your character and accomplishments.

James Garland AIA, President, Fluidity Design Consultants Inc™

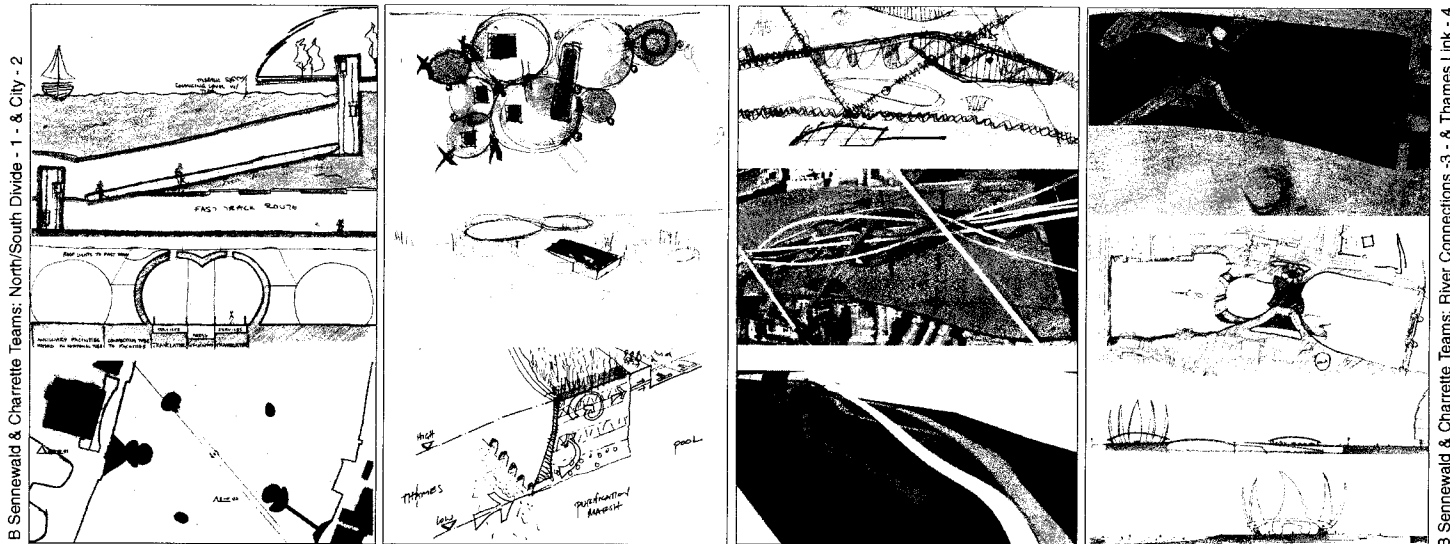


Lutron Lighting Control Systems

Lutron House • 6 Sovereign Close • Wapping • London E1W 3JE • England • United Kingdom
 telephone 44 (0)20 7702 0657 • fax 44 (0)20 7480 6899 • website: www.lutron.com/europe

A Corporate Sponsor of AIA-London/UK

2003 Design Charrette at London City Hall



B Sennewald & Charrette Teams: North/South Divide - 1 - & City - 2

B Sennewald & Charrette Teams: River Connections - 3 - & Thames Link - 4

page 1 - Team "London Link" - left to right above - Teams "North/South Divide" - "City" - "River Connections" - "Thames Link."

- continued from p 1 - task of assessing the schemes from each of the teams: Paul Finch OBE, Hon FRIBA, co-Chairman of CABE and the Editorial Director of EMAP chaired the Jury, which included Professor John Rafferty of Oxford Brookes University, Chris Dyson RIBA of Terry Farrell & Partners Architects, David Glover, a Director of Arup Engineering and Norman Krangle of Call Print, the Charrette Sponsor.

The Jury commented on the extra-ordinary variety, ingenuity and richness of the schemes.

Call Print, the long-standing Charrette sponsor, were again generous, providing free reprographic services, which included scanning images and printing from computer files for the first time.

The architects who participated in the Event included Anderson Inge AIA, Clarissa Matthews of Ian Ritchie Architects, Robert Smith and Daniel Poehner of Foster and Partners, John Onken AIA RIBA of 3s Architects, Lester Korzilius AIA RIBA of YRM and Cecile Brisac

RIBA of Brisac Gonzales Architects, amongst other professionals.

Three winners selected by the Jury included: First Prize to Team "North/South Divide" lead by Lester Korzilius and Cecile Brisac; Second Prize, Team "City" lead by John Onken and Third Prize "Tideway" lead by Clarissa Matthews.

The 2003 Design Charrette concluded with an excellent party at the top of the the best "London Living Room" along the Thames overlooking the Tower of London and at the Tower Bridge - a moment to remember, as the AIA London/UK looks forward with pleasure to another inspiring Charrette in November 2004 and we invite you the readers of AIA UK NEWS to suggest any ideas you may have on a suitable project and venue.

Bea Sennewald AIA RIBA and Kevin Flanagan AIA, Directors in Charge, 2003 AIA London/UK Design Charrette - photos below right and p 7 right centre, respectively.



B Sennewald - 1 & 2

John Onkin presenting "City" scheme - left - Lester Korzilius and Cecile Grisac Team "North/South Divide" - right - Clarissa Matthews with Team "Tideway" - below 1 & 2 - "London Link" presenter - 3 - Jury members David Glover, John Rafferty, Norman Krangle and Paul Finch - 4.



B Sennewald - 1 - 2 - 3 & 4

left to right below - Team "Sei 6 What" - 1 - Team "North/South Divide" - 2 - Team "Hackney" - 3 - project site aerial photo - 4 .



B Sennewald - 1 - 2 & 3

Aerial photo - unknown source



Call Print A Corporate Sponsor of AIA London/UK
 163 - 169 Great Portland Street • London W1N 5SD • England • United Kingdom
 telephone 44 (0)20 7580 7122 • fax 44 (0)20 7580 7083 • website www.callprint.co.uk

Tate Britain Tour

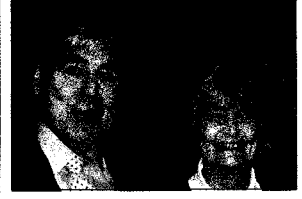
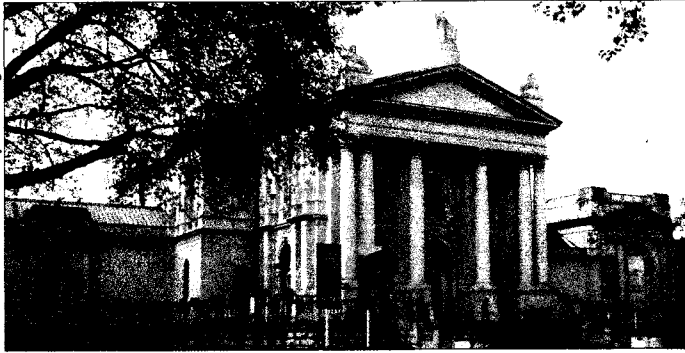
On the evening of 5th March, members and guests of AIA London/UK enjoyed a magical guided tour of the Tate Museum of British Art at Millbank by John Miller RIBA and Su Rogers of John Miller Partnership - photo below right - who are the architects for the museum's recent Centenary Development. It follows a continuous expansion of the original neo-classic Museum, built in 1897, designed by Sidney R. J. Smith on the former Millbank Penitentiary site following a bequest to the Nation from Henry Tate. It houses the collection of British art from 1500 to the present, including works by Van Dyck, Hogarth, Gainsborough, Constable, Turner, the Pre-Raphaelites, Sickert, Moore, Bacon, Hockney, among others. The creation of Tate Britain was made possible by a vigorous public/private fundraising

effort yielding £32.3m including a grant of £18.75m from the Heritage Lottery Fund. It opened in November 2001. Attendees of the tour, which earned CES units, learned about the art museum design and space planning techniques used including the integration of new modern gallery spaces at ground level with the existing high quality top-lit classical galleries on the upper level - photo centre - new stairs, cloak-rooms, museum shop, restaurant, coffee shop and research centre, with improved access into the Lower Level. The was also treated to a viewing of the Pre-Raphaelite Vision Exhibition: Truth to Nature featuring well-known paintings by Ford Madox Brown, John Everett Millais and Thomas Seddon, amongst others, with live background music performing in the Main Entrance Hall. To see what marvelous things Tate

Britain has to offer, visit website www.tate.org.uk/britain.

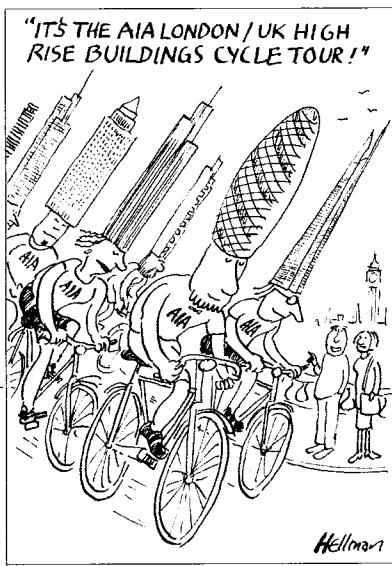
Harry Goforth Int'l Associate AIA RIBA, Director for CES, AIA London/UK

H Goforth - 1 & 3 - Courtesy of S Rogers - 2



Hellman

C E S Update



Louis Hellman - 27 April 2004

This is the fourth in the series of architectural cartoons for AIA UK NEWS by Louis Hellman MBE.

During periods of intensive activity in the construction industry, we as Architects work to our limit and fulfill ourselves and our obligations under 'the building contracts'. But we also have an obligation to the public via our Licensing Authorities to maintain and keep records of our Continuing Education no matter whether we are a Senior Partner in an Architects Journal AJ100 firm or a sole practitioner in deepest Dorset. If we fail to do this we are liable to suspension of our membership in the Institute and our State Licensing Authority. So this is a reminder to regularly update your transcript on the www.aia.org/conted website

by self-reporting all of the CES activities and events in which you are involved, unless those events are being reported by a Registered Provider.

Recent visitors to the CES section of the Chapter's website at www.aiauk.org will have noticed updated data including links to other organizations providing Continuing Professional Development (CPD) opportunities. These include the RIBA, the AJ, Architecture Today, The Building Centre Trust and the AA School of Architecture. These are only a few in existence and all of these sites provide links to other sites which should be investigated. In particular, the information on CPD at the RIBA is the most comprehensive. For readers of Architectural Record, excellent CPD articles at the back of the magazine offer another way of earning LU's, but check that your State Licensing Authority accepts these too. Try logging on to www.archrecord.construction.com/resources/conteduc/.

For UK Registered RIBA Architects, it is worth noting that, as of 2 April 2004, the RIBA now requires that each member record 35 hours of CPD annually online to be individually monitored by the RIBA - the AIA and most State Licensing Authorities require only 18 hours.

Harry Goforth Int'l Associate AIA RIBA, Director for CES, AIA London/UK.



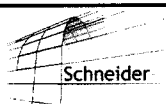
From AIA National Washington

Greetings from Washington, D.C. The past few months have been very full ones for the AIA national component with a number of issues receiving close attention such as the AIA's sustainability agenda, diversity in the profession, promoting the AIA brand, increasing support to architectural interns, the impact of globalization on the profession, discussions with the UIA on CES approved courses overseas, and the dramatic increase in steel prices.

During Grassroots I had the pleasure of helping facilitate a meeting of overseas chapter members where discussion focused on recruitment of AIA members residing abroad, aligning the overseas chapters with state components in the U.S. in order to gain voting rights, taking advantage of the resources of the AIA website, etc. Grassroots is an excellent way for the overseas chapters to gain an insider view of the AIA and to

understand the variety of services that they can avail themselves of. Convention is another eye-opener and I encourage you to attend if at all possible. Of interest to those of you who plan to attend this year's Convention in Chicago are, among many other exciting seminars and events, a Business Meeting for the overseas chapters on Thursday, June 10, at 10:30 a.m. and the AIA International Committee Reception on Friday at 6 p.m. Be sure not to miss either one! Much of interest is happening throughout the AIA and there is plenty for our members residing in the U.K. and other countries to take advantage of!

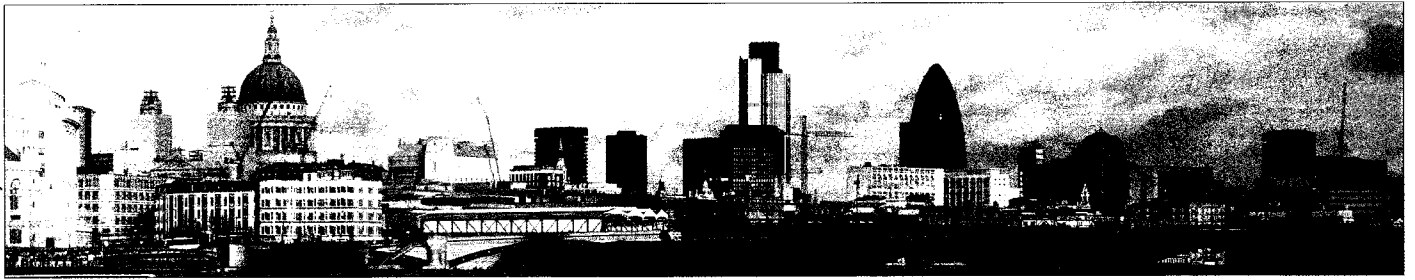
Elizabeth Casqueiro AIA, Managing Director for Alliances, AIA National, Washington, DC.



Gebrüder Schneider Fensterfabrik GmbH & Co. A Corporate Sponsor of AIA London/UK
 49 Wilkins House • Churchill Gardens • London SW1V 3BY • England • United Kingdom
 telephone 44 (0)20 7592 9562 • fax 44 (0)20 7592 9566

2004 Super Saturday at Broadgate London

New City Architecture
www.newcityarchitecture.com



New London 2012 – the theme of the 2004 AIA Super Saturday Lectures which will focus on the ever changing London skyline.

The venue – **Broadgate**, adjacent to Liverpool Street Station at the 7th Floor – 6 Broadgate, London EC2, by the generosity of British Land.

The AIA London/UK has the pleasure in announcing the second in the series of Super Saturdays, which was inaugurated a year ago in May 2003. This again will provide opportunities to seek CES credits – potentially six (6) units, including HSW units.

The programme includes seven speakers from the design offices of Nicholas Grimshaw Architects, Richard Rogers Partnership, Arup Group 4, Urban Design Consultant, British Land and Kohn Peterson Fox Ltd. (KPF), and are, respectively: Nevin Sidor, Graham Stirk, David Glover, Richard Coleman, Paul Burgess, Lee Palisano FAIA and Kevin Flanagan AIA. A brief introductory presentation on the history and evolution of urban development in London will lead the way to a discussion of ideas for shaping its future urban form.

The programme is also eligible for self-reported CPD credits for RIBA

members. After the lectures, the optional guided tour of the exhibition “New City Architecture” at **Finsbury Square** will offer further credits.

The forum to include creation of tall buildings from inception, formulation of sustainable and health - safety services strategies, through planning stages: The Shard of Glass, Minerva Tower, 122 Leadenhall and Heron Tower are among the projects to be discussed and debated.

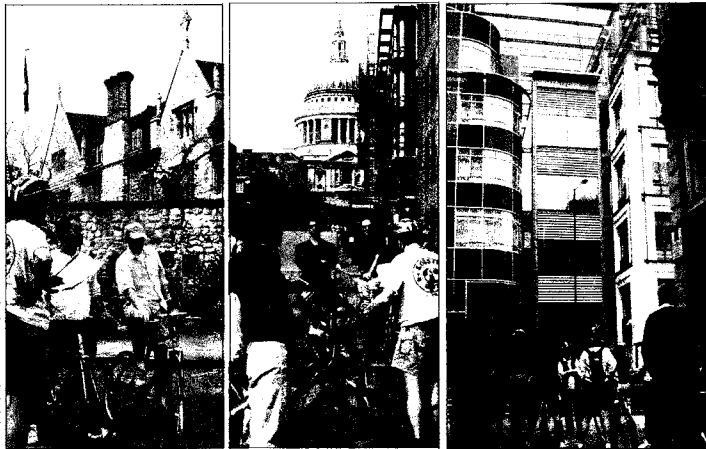
The impact of tall buildings to the potential transformation and rejuvenation of urban fabric both social and infrastructural, opportunities for innovation and other influences, would inspire those attending the Super Saturday on 22nd May to take part in exchanges of views on the emerging architecture in Greater London. And what about the 2012 Olympics bid?

The event is a collaboration of British Land, New City Architecture, organised by KPF Ltd. London and will be chaired by Kevin Flanagan AIA, Director AIA London/UK, Senior Associate Partner of KPF.

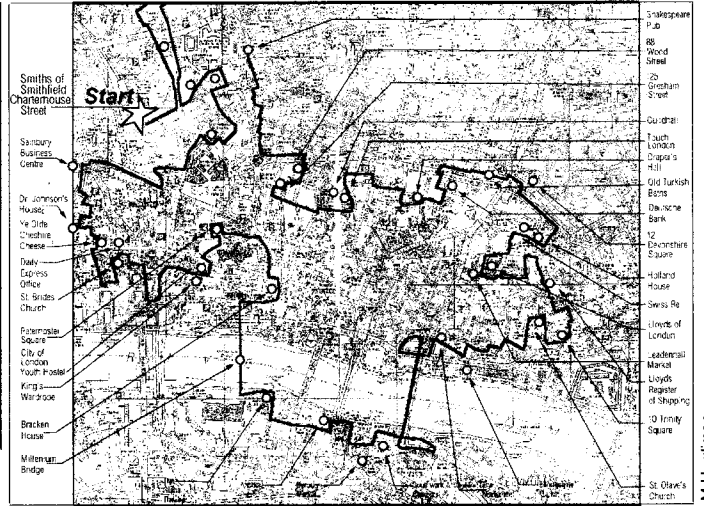


H Takecia

Annual AIA London Cycle Tour



H Goforth - 1 - 2 & 3



M Hardiman

In it's fourth year, the annual AIA London/UK Cycle Tour is now a flying tradition, with a continuing theme of looking at London from it's development along the Thames. All three previous tours have skirted around the periphery of City centre. But we rode into the heart of it on a Sunday, the 25th April, when the tempo of the metropolis gives up it's frenetic pace to reveal the gems that go unnoticed during the workweek.

The Tour included an impressive showing of Board members, new RIBA friends and folks from the London Cycling Campaign. After feast of English breakfast at Smith's of Smithfield, on account of a tire blowout, the pack was reduced to 17 from the original 18. The gang looked remarkable – architects and friends on spokes, adding nothing to pollute the planet, smiling in the sunshine, taking in the cityscape as far as you could see. The Tour took in the areas around St. Bartholomew Hospital, Fleet Street, Paternoster Square under the hovering St Paul's Cathedral, the Millennium Bridge, Bankside, the Monument,

Leadenhall Market, Swiss Re—the “Gerkin”, very small Turkish Bath, Guildhall, 25 Gresham Street and 88 Wood Street. At a fast clip and we slid into a welcome refreshments at a Clerkenwell pub to close another AIA London/UK Cycle Day , with mind to a new version of Syon & Chiswick Tour in August. Michael Hardiman AIA, 2004 President, AIA London/UK organised this unique architectural Cycle Tour .



H Goforth - 1 & 2



Herman Miller Limited

149 Tottenham Court Road • London W1T 7JA • England • United Kingdom
telephone 44 (0)20 7388 7331 • fax 44 (0)20 7387 3507 • website <http://www.hmeurope.com>

A Corporate Partner of AIA•London/UK

From the President



H Goforth

Change has been in the air at the AIA London/UK for some time. Part of this, I'm sure, is the sense of the passing of the Ten Year Anniversary and that it's time to re-assess why we are here. The other motivator is the recognition that the population we serve is not the same band of expatriates who found their way across the Atlantic a decade ago.

Chapter members today are well entrenched into UK society and less in need of the Chapter that holds their social life together.

Today, there are all manner of activities available for members to augment their learning. Internet based CES and other like services have meant that we are not really that far from the States. Fortunately, we have a nimble creative team that offer opportunities that are unique to our position as US practitioners in the UK.

Many of the 'Old Guard' have stepped down to make way for new Officers and Directors, who now have made the plunge to meet the challenge.

The repertoire of events have been slimmed down in order to concentrate and tailor more to enhance the CES requirements, while boosting

Member attendance. The inaugural success of Super Saturday last year is an example of this.. In addition to the upcoming one on next Saturday, another one is planned in the Fall.

The Chapter Bylaws are being examined by the Legal Team at the AIA National for advice to the Chapter, which would reinforce them. It's still early but we've had a great year so far as reported in this issue of AIA UK NEWS.. More adventure and CES credits opportunities and events to come. The year is young!

Michael Hardiman AIA, President, AIA London/UK.

Annual General Meeting - AGM

The Annual General Meeting of AIA London/UK chapter was held on Wednesday 7th January – the venue at the offices of Herman Miller. With approval from the attendees the following slate of 2004 Chapter Officers and Board Members were approved see roster of **Officers** and **Directors** below.

The Incoming President Hardiman thanked the outgoing 2003 Chapter Leadership including Elizabeth Casqueiro AIA and Lester Korzilius AIA RIBA and the rest of those board members stepping down: Tim

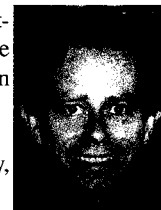
Gale AIA, Jennifer Kyner AIA, Lorraine King AIA, Michael Lischer AIA, Stephen Reinke AIA, Kenneth Schwarz AIA and Hiko Takeda AIA RIBA.

The highlight of the evening was a Power Point presentation given by Michael Hardiman covering 13 events organized by the Chapter in 2003. This was followed by a discussion of objectives that the Chapter has identified for the up coming year, including, fewer but more exciting events, better publicity, engagement of US architects in the UK, website enhancement, among other targets. The evening was capped with a review of

the events planned so far for 2004 and a reminder of a number of opportunities for greater participation by the Members to lend their hand on Chapter activities.

We are grateful to Herman Miller for their hospitality and accommodating us with an excellent venue for the Chapter's AGM again this year.

Keith Millay AIA, Secretary, AIA London/UK.



Number 41

Contents

April 2004

2003 Keynote Speaker Cesar Pelli, p 1-2 · 2004 Design Excellence Awards Gala, p 1-3 · 2003 Design Charette, p 1-5 · Paul Finch AIA London/UK Honorary Memeber, p 2 · The Sketch , p 4 · McGraw Hill President Norbert Young, p 4 · Fluidity Water Design Seminar, p 4 · The Tate Britain Tour, p 6, · Continuing Education System (CES), p 6 · Hellman Cartoon, p 6 · From AIA National, p 6 · 2004 Super Saturday , p 7 · AIA London/UK Cycle Tour, p 7 · From the President, p 8 · Annual General Meeting, GM p 8 · Contents · AIA London/UK Officers, Directors, the Editorial Staff, Contributors of articles, drawings & photographs.

The United Kingdom Chapter of the American Institute of Architects

Officers

President · Michael Hardiman AIA **Vice President** · James Baker FAIA **Treasurer** · C. Anderson Inge AIA **Secretary** · Keith Millay AIA
Chapter Executive · Michael Deguzman

Directors

Kevin Flanagan AIA · Harry Goforth Jr. Int'l Associate AIA RIBA · M. J. Long AIA RIBA · Don Porter AIA · Robert Schmidt AIA
 Celia Scott AIA RIBA · Bea Sennewald AIA RIBA · Claire Weldin AIA RIBA

AIA • UK • NEWS

AIA-UK-NEWS is a service provided by AIA members in the United Kingdom to the public, the profession and anyone interested in the activities of design by professionals who are working abroad. Notes to the Editor, suggestions, criticism, etc., are welcome. Submissions may be sent to the contacts noted herein. Typed material and images intended for publication must reach the Editorial Director by the end of August 2004. Appropriate submissions are edited and published as space and time permit and at the discretion of the AIA-London/UK Board of Directors. Copyright © 2004 AIA-London/UK. All rights reserved. When necessary, permission is granted by the copyright owner noted therein. Photocopies of any articles therein are only for personal and internal reference use. Information has been obtained by AIA-London/UK from sources believed to be reliable. However, because of the possibility of human or mechanical error by our sources, AIA-London/UK does not guarantee the accuracy, adequacy and completeness of any information, and it is not responsible for any errors and omissions therein nor for the results to be obtained from the use of such information for any damages resulting therefrom.

Editorial Director Hiko Takeda AIA RIBA · **Photograph & Graphics Editor** Harry Goforth Int'l Associate AIA RIBA · **Communication Director** Celia Scott AIA RIBA · **Data Base Director** Michael Lischer AIA RIBA · **AIA National Correspondent** Elizabeth Casqueiro AIA · **Photographers-at-Large** Michael Deguzman Harry Goforth · Int'l Associate AIA RIBA · **Cartoonist** Louis Hellman MBE RIBA · **Circulation Manager** Michael Deguzman ·

Article contributors: Elizabeth Casqueiro · Kevin Flanagan · James Garland · Harry Goforth · Michael Hardiman · Lester Korzilius · Keith Millay · Steven Norris · Alexander Phillips · Bea Sennewald · Hiko Takeda · **Photographs:** Stephen Ambrose · Peter Cook/New Pictures · James Curtis · Michael Deguzman · Alex de Reijke · Harry Goforth · MACE Limited · McGraw-Hill Construction · John Miller Partnership · New City Architecture · www.newcityarchitecture.com · Cesar Pelli & Associates · Vijay Patel · Bea Sennewald · Tim Soar · Edmond Sumner · Wilkinson Eyre Architects · Hiko Takeda · Nick Wood · **Cartoon:** Louis Hellman · **Drawings:** James Eyre · Michael Hardiman · Cesar Pelli · Chris Wikinson · Members of the 2003 Design Charrette Teams named therein ·

AIA London/UK · Benjamin Franklin House · 36 Craven Street · London WC2N 5NF · England · United Kingdom

web-site www.aiauk.org · e-mail info@aiauk.org · telephone 44 (0)20 7930 9124 · fax 44 (0)20 7930 9124

