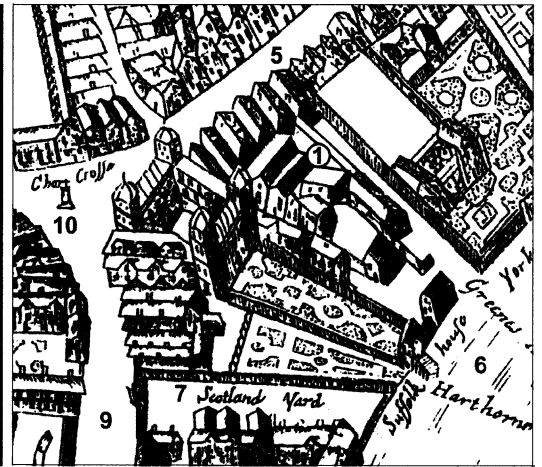
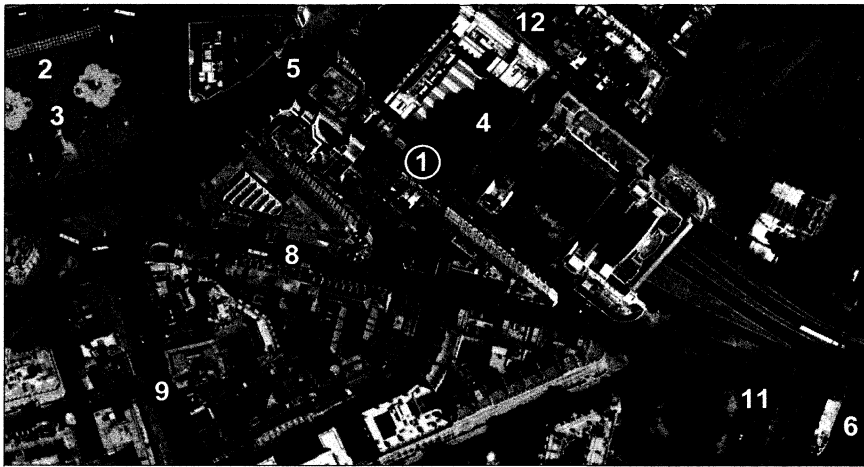




Benjamin Franklin House · AIA London/UK

GeoInformation Group Limited · legend by AIA UK NEWS



Unknown source courtesy of Alan Baxter & Associates

1-Benjamin Franklin House and AIA London/UK, 36 Craven Street, 2-Trafalgar Square, 3-Nelson's Column, 4-Charing Cross Station, 5- Strand, 6-The River Thames, 7-Old Scotland Yard, 8-Northumberland Street, 9-Whitehall, 10-Old Charing Cross, 11-Victoria Embankment, 12-John Adam Street.

Passersby wishing to visit the American Institute of Architects' London/UK headquarters are often surprised to see that the offices are in the former residence of Benjamin Franklin, who lived at 36 Craven Street for nearly sixteen years. The House, located just off the Strand behind Charing Cross Station, served as his home during his tumultuous London years. It was a perfect base for Franklin, halfway between the City of Westminster and the City of London. Such "genteel lodgings" in Franklin's words, were the setting for his many experiments, writings and political negotiations.

While it seems rather peculiar to centre an association of architects – whose members are com-

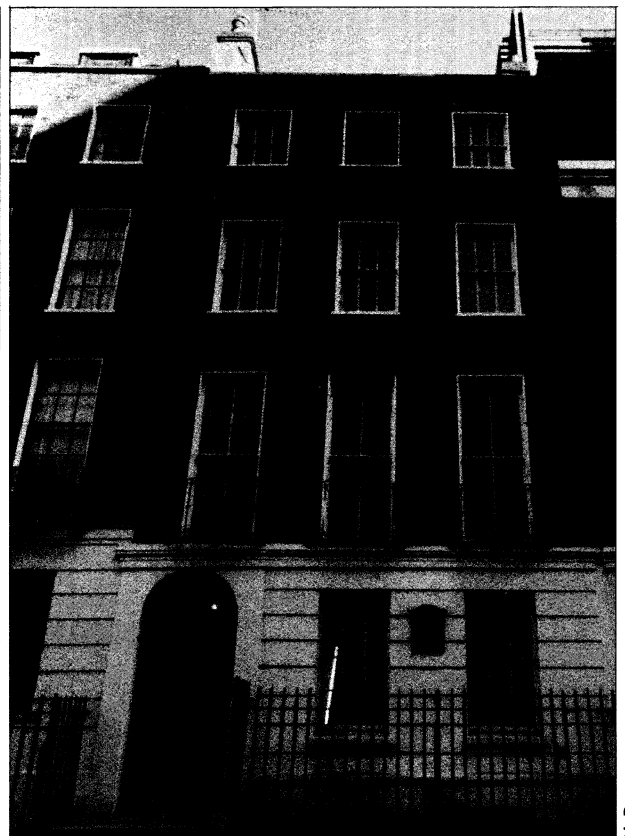
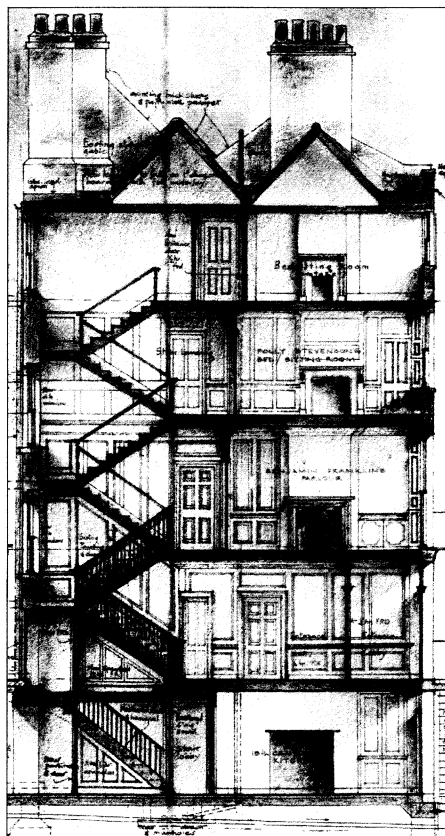
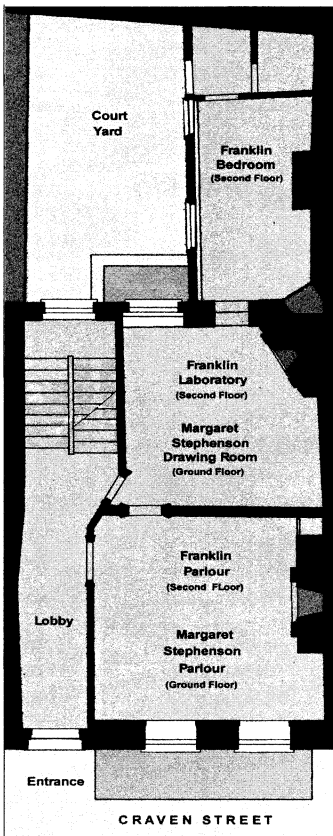
mitted to pushing the limits of science, technology, and imagination – in a building nearly 270 years old, the association with Franklin is both logical and an honour. Benjamin Franklin's chief attributes of imagination and creativity apply equally to members of the AIA UK/London chapter.

The Grade I-listed (Britain's highest heritage rating) Georgian brick terrace house at 36 Craven Street was built circa 1740 by H Flintcroft on a lease from the 6th Earl of Craven. The House is typical of the period, containing five stories – each two rooms deep – with a rear Victorian extension on the upper three floors, approximately 4,000 square feet.

Architecturally, it is a distinctive building, as many of the original features remain intact, including its paneling and staircase. Surviving fire, flood, structural instability, looters, and even German Luftwaffe bombs (the buildings directly opposite were destroyed during World War II) it is a wonder that the building still stands.

The story of the House continues to evolve even today – new revelations are being made as conservation work progresses. During basement excavations in 1997 over 1200 cut and trepanned bones were found, apparently discarded following student dissections. These were the remnants of an - continue to p 2.

Illustrative plan based on data from Patric Dillon Architect, - 1, Section by Donald Insall Associates Architects - 2



M. Deguzman

From the President



As this article goes to press we are making last minute preparations for our Annual Student Design Charrette. The bulk of the organisation is being done by two board members, Bea Sennewald

AIA and Kevin Flanagan AIA of HDR and KPF respectively. It promises to be an outstanding event with anticipated student representation from across the UK with an all-star jury led by the effervescent Paul Finch Hon. FRIBA of CABE and Architects' Journal.

This got me to thinking of the unique vitality the AIA has as a group both in the UK and in the States. Our strength lies in our grassroots approach. Take our chapter as an example. Each year we are hosting major events such

as the Charrette, Design Awards, and Keynote Lecture, in addition to hosting many building tours, seminars, summer parties and CPD events, and producing a first-rate newsletter. These are all organised by individual members of our chapter who all maintain full-time jobs and have full social commitments. Never has anyone fumbled when they've carried the ball. When you step back and look at this, you realise what a terrific achievement this all is. Well done everyone!

I look forward to seeing you all at our upcoming events, particularly the Student Charrette on October 18th and the Keynote Lecture, being given by Cesar Pelli FAIA on November 20th. The theme this year is Buildings and Ideas, and Mr Pelli will amplify his points with some of his projects which include Canary Wharf, the World

Financial Centre, Petronas Towers and the Reagan Airport in Washington D.C. Preparations are also underway for the AIA UK Design Awards. RTKL, under the leadership of their director Rick Drake AIA, are organising this event. The jury selection is critical in the Design Awards and there have been many interesting debates to date. One reason that the awards are so successful is that while we are a US-based organisation, the awards are non-partisan and recognise excellence in architecture. Watch this space!

If there is a topic that particularly interests you, why not put together a programme for the AIA? Get involved – it's what the AIA is all about.

Lester Korzilius AIA RIBA 2003 President
· AIA London/UK

Benjamin Franklin House - continued

anatomy school that the son-in-law of Franklin's landlady, William Hewson, operated at the House, after Franklin had left in 1775. Workers have also found in one of Franklin's private fireplaces, evidence of his studies on creating a more fuel-efficient stove.

As AIA London/UK's membership comprises mostly Americans, it is apt that the chapter's base is in the former dwelling of the man who was dubbed 'The First American' by scholar H W Brands. AIA London/UK's association with this great politician, scientist, writer, and thinker is indeed an honour. Like Franklin, members of the AIA London/UK chapter strive to forge stronger cross-Atlantic cooperation.

Phase I, preserving the structural integrity of the building was completed in 1999, and Phase II, the interior conservation of Franklin's former residence, is now underway. A unique Historical Experience, Student Science Centre and Scholarship Centre will showcase Franklin's many contributions during his London years. To learn more about the project, visit www.thersa.org/franklin.

Compiled by Michael Deguzman, Chapter Executive AIA London/UK – right photo below, in collaboration with Márcia Balisciano MA PhD, Director, Friends of Benjamin Franklin House (FBFH) – left - and Anne



Keigher Associate AIA, Governor, Treasurer and Honorary Conservation Project Manager of FBFH - centre.

Hellman



This is the third in the series of cartoons for AIA UK NEWS by Louis Hellman MBE, who was recently honored with the Award for the Year 2003 by the Worshipful Company of Chartered Architects for his contribution to the work of Architects Benevolent Society

From A I A National · Washington



Although many of us have been members of the AIA for years, we are not always aware of some of the interesting facts concerning the organization we belong to. For instance, did you know

that the AIA, representing over 71,000 members, is made up of 293 components: the national component, 54 state components, and 238 local components, including AIA London/UK, AIA Continental Europe and

AIA Hong Kong? The New York chapter is the oldest and largest component within the AIA with over 3,000 members and, on the other end of the spectrum, the AIA Farmington in New Mexico, has only 9 members.

The AIA is currently focusing on key areas including: emerging professionals, specifically interns and young architects; livable communities; advocacy for the profession; and knowledge. In the latter arena, the organization is striving to become a premier source of knowledge and learning for architects, a one-stop shop to

access any area of expertise required.

The AIA also wants to be seen more and more as a unified, single organization, rather than as a separate corporate body with a number of autonomous branches. For this to happen, seamless communication processes within the organization and between the AIA and its membership is essential, and there is a considerable drive to make this happen.

Elizabeth Casqueiro AIA, Managing Director for Alliances, AIA National, Washington, D C.



Benjamin Franklin at 36 Craven Street · London

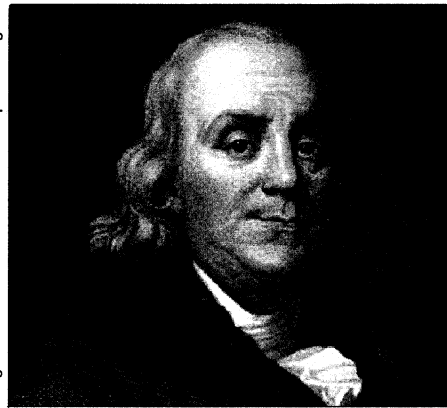
By the time Benjamin Franklin (1706-1790) arrived at Craven Street in 1757, to negotiate Colonial interests before the Crown, he had achieved world renown – see Chronology right. He had disseminated knowledge in many fields as a printer, publisher, and writer; created America's first subscription library and fire insurance company and one of its earliest hospitals and universities; worked as a public servant; established a modern postal service; and, of course carried out that hallmark of the Age of Enlightenment, the kite and key experiment, which proved lightning to be an electrical phenomenon.

At the House, he also explored the Gulf Stream, perfected bifocal lenses, invented the glass armonica for which Mozart, Bach and Beethoven composed, worked on simplifying the English language, championed inoculation and a cure for the common cold, and among other things, developed the anti-pollution fuel-efficient Franklin Stove.

36 Craven Street also served as the first de facto American Embassy, where the likes of William Pitt, the Elder came to negotiate with Franklin on preserving the tie between Britain and America. When differences proved intractable and with a warrant out for his arrest, Franklin left England to become one of the United States' Founding Fathers. In fact, he is the only Founding Father to have signed all three documents creating the United States – the Declaration of Independence, the Treaty of Paris, and the Constitution.

A new relationship was born which has deepened over the subsequent centuries and is more than evident today. As an Anglo-American,

Engraver J Thomson · 1806 · of J A Duplessis original



Franklin was at the heart of that creation.

As the British Chancellor of Exchequer Gordon Brown has noted, "Benjamin Franklin's life and career reminds us of how both Britain and America are stronger because of the shared history that shapes our countries and links our destinies and because of the shared values that bind us ever more closely together."

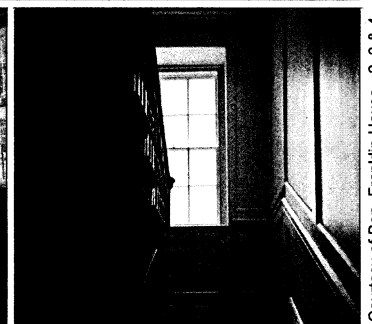
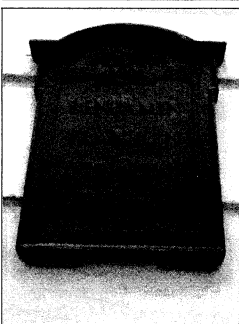
Recently, the US Congress established the Tercentenary Commission to celebrate the 300th anniversary of Franklin's birth declaring "Benjamin Franklin was one of the most extraordinary men of the generation that founded the United States. Around the world, he remains one of the best-known Americans who has ever lived. All people in the United States could benefit from studying the life of Benjamin Franklin and gaining a deeper appreciation of his legacy to the Nation."

Compiled by Michael Deguzman, Chapter Executive AIA London/UK with Márcia Balisciano MA PhD, Director, FBFH.

BENJAMIN FRANKLIN CHRONOLOGY

17 January 1706	born in Boston Massachusetts.
1723 - 1730	train and work as printer, sent to London to buy printing presses.
1730	married Deborah Read.
1757	left New York, as a representative of the Pennsylvania Assembly - arrived at Falmouth, England.
27 July 1757	arrived London - took residence at Margaret Stevenson's House on Craven Street.
1760	began fight to repeal the Stamp Act.
1761	attended Coronation of King George III
1762	left England and returned to Philadelphia.
9 December 1764	returned to England age 58, arrived London, moved back into Margaret Stevenson's House on Craven Street.
13 February 1766	appear before the House of Commons, argue "taxation without representation."
1766 - 1767	travelled to Holland, Germany and France. William Pitt told House of Lords Franklin ranked with Isaac Newton as a scientist.
1774	while in England, wife Rebecca Read Franklin dies in Philadelphia.
21 March 1775	left England and returned to America.
19 April 1775	American Revolutionary War began.
5 May 1775	arrived in Philadelphia - age 69 - elected to Continental Congress.
4 July 1776	signed the Declaration of Independence, elected President of the Constitutional Committee of Pennsylvania, sent to France as an American Commissioner. appointed Minister to France.
6 February 1778	call France to join the War.
30 November 1782	end of Revolutionary War.
3 September 1783	signed the Treaty of Paris - Treaty of Peace with Great Britain.
1785	returned to America and elected President of Pennsylvania.
1786	perform last public act, appealed Congress for speedy abolition of slavery, then retired from public life at age 80
1787	but served as a Delegate to the Constitutional Convention, signed it, elected President of the Pennsylvania Society for Promoting the Abolition of Slavery.
17 April 1790	Franklin died at 84, buried in the cemetery of Christ Church in Philadelphia.

Franklin House Workshop



In early 2004, Benjamin Franklin House and AIA London/UK plan to present a series of workshops centering upon ongoing conservation work at 36 Craven Street. They will focus on the presentation of previous years' achievements of conserving the ground and first floors of this 18th century Georgian terrace house and its wider plans and objectives for the future; in conjunction with learning more about how Benjamin Franklin lived and worked in the house.

Anne Keigher, Assoc AIA, Honorary Conservation Project Manager, will lead dis-

cussions along with Patrick Dillon, Chief Architect and others from the project management team. The workshops present an ideal opportunity for AIA members to achieve a maximum number of mandatory CES (Continuing Education System) credits, and invitations are extended to members from the RIBA for CPD accreditation. In addition, this will be a forum for participation from students. The proposed topics for the seminars include the building environs and contextual history, construction technology including environmental engineering (heating, ventilation and air conditioning), conservation issues relevant to UK legislation in

the 21st century, interior refurbishment (restoration of architectural detailing, plaster and paint analysis), building sustainability and occupation of future use, and any other matters that face preservation work of this nature. The seminars would also be of great benefit to a wide spectrum of professionals outside of Chapter members. Further details on the Workshop will appear later – Chapter contact, see p 8.

Compiled by Michael Deguzman, Chapter Executive AIA London/UK, with Anne Keigher Assoc. AIA, Governor, Treasurer and Hon. Conservation Project Manager of Friends of Benjamin Franklin House.



INTERFACE

Interface Europe Limited

Shelf Mills · Shelf · Halifax · West Yorkshire HX3 7PA · England · United Kingdom
telephone 44 (0)1274 690 690 · fax 44 (0)1274 698 300 · website interfaceinc.com

A Corporate Partner of AIA-London/UK

CES UPDATE

With the recent simplification of the online procedures for viewing members' Continuing Education Transcripts and for Self-reporting learning activities it is now easier to carry out this important exercise. Log on to www.aia.org/conted, click on AIA/CES Transcripts, enter your AIA membership number and click on 'sign in'. You then have a choice of either Viewing your Transcript, using a Self Report Form, completing a Program Evaluation Form, reading FAQ's or contacting the AIA/CES Records Department in Norman Oklahoma direct. The Transcripts currently show the total number of credits you have earned for the last 3 years with details of

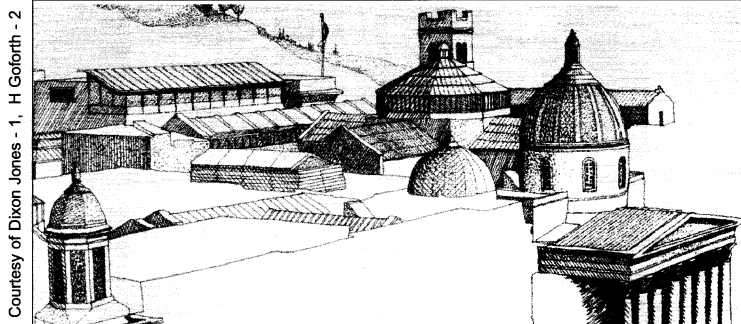
the events you attended in 2002 and 2003. For each event the Transcript gives the Registered Provider number and the event number as well as the LU Hours and the date of the event.

If you are self-reporting activities such as RIBA CPD Provider Network events you can use the AIA/CES Self Report Form online. This form is easy to read and is self-explanatory. It is worth emphasizing that Self-Designed Activities are OK for ordinary AIA credits but not for HSW (Health, Safety and Welfare) credit which must be a structured activity offered by a formal organization. Even though the RIBA is an AIA/CES Registered Provider, it does not report the attendance of its events to

AIA/CES. These, therefore, need to be self-reported by members themselves on the Self-Report Form. It is important to provide all of the information requested on the form, including ticking the appropriate boxes and describing what new knowledge or skill you gained from the learning activity. For HSW events make sure you tick the HSW box. Check the definitions of HSW subject areas in item 8. in the FAQ. If your self-reported activities do not appear on your Transcript within a week or two contact the CES Transcript Office direct on 001-800 605 8229.

Harry Goforth, Int'l Associate AIA, RIBA, Director for CES, AIA London/UK

National Portrait Gallery Tour



Edward Jones RIBA of Dixon Jones architects of the National Portrait Gallery extension, hosted a tour of the building for a group of AIA London/UK colleagues earlier this year on 13th

March. – right photo above. The tour of Dixon Jones' superb remodelling of the Gallery (see p 4, No. 38, March 2003, AIA UK News), made for an enjoyable and edifying evening for mem-

bers of the Chapter. Images here remind us of the project's successes, their sensitive approach to complex design projects and highlights of the tour.

B B C White City Extension Project Tour



On the 25th of June 2003 the AIA London/UK Chapter had a special opportunity to visit a new building under construction; the BBC White City Project designed by architects Allies & Morrison. With the cooperation of management contractors Bovis Lend Lease, the site was opened up to AIA members for a late evening tour, complete with 35 hard hats and 35 pairs of safety boots.

The BBC White City Project is a group of several buildings and is the first phase of a large scale master plan for the area. Comprising 133,000 m² at a cost of £207 million, the current new buildings include the critical Digital Broadcast Centre (a giant internal space for the next generation of technological advances), an Energy Centre, a Central Office

Building for BBC and non-BBC companies, and two small, speculative office buildings.

Jo Bacon from Allies & Morrison gave an overview of the project, explaining the design concept and the interdisciplinary approach required to implement it. James Parkin, the A&M's architect responsible for the building façade - right photo above, highlighted the working relationship developed with the specialist cladding sub contractor, Schneider (GB). Stephen Tanno - left photo above, Schneider's UK Technical Manager, then explained how the architect's aesthetic aspirations were reconciled to the complex technological requirements of

the façade - acoustic, thermal, solar, bomb blast, maintenance and constructability conditions.

It became evident that this project represents a rare commodity: a well designed, well run project, without the massive cost and programme overruns that seem to characterise many other government architectural ventures.

With an extended and valuable question and answer session, attending AIA members were able to earn 2¼ HSW continuing education learning units.

Lorrain King AIA, Tour organiser, Director & Secretary, AIA London UK - left photo above.

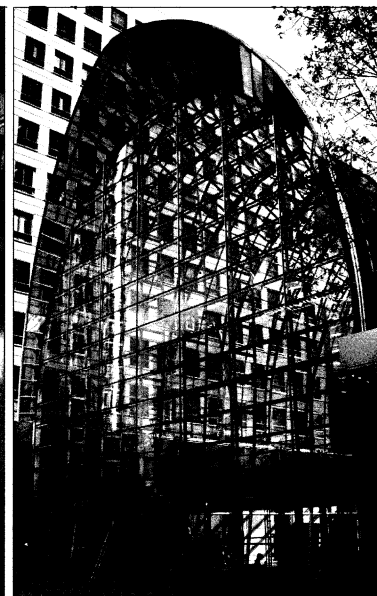
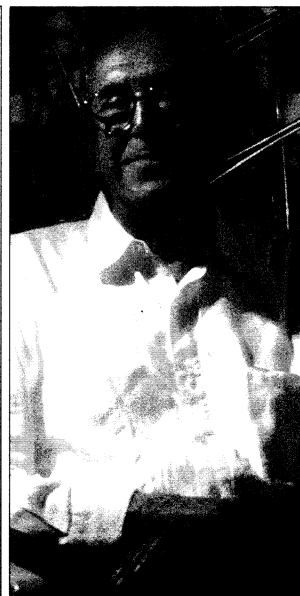
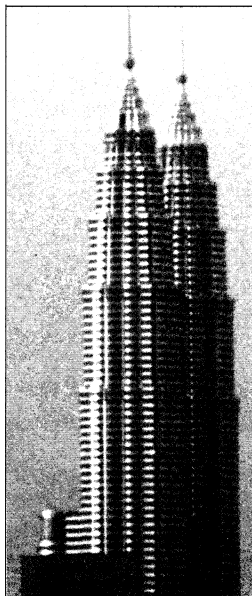
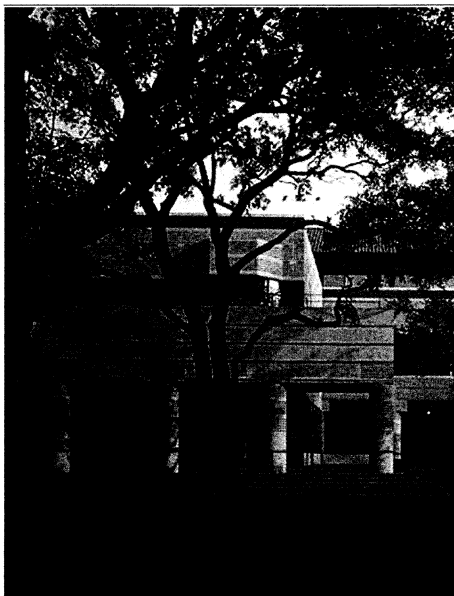


Lutron Lighting Control Systems

Lutron House · 6 Sovereign Close · Wapping · London E1W 3JE · England · United Kingdom
telephone 44 (0)20 7702 0657 · fax 44 (0)20 7480 6899 · website: www.lutron.com/europe

A Corporate Partner of AIA London/UK

Cesar Pelli Keynote Speaker at Canary Wharf, London



Courtesy of Cesar Pelli & Associates - 1, 2, & 3

H Goforth

Left to right - Rice University, Texas · Petrona Twin Towers, Kuala Lumpur, Malaysia · Cesar Pelli FAIA · East Winter Garden, Canary Wharf, London

The AIA Keynote Lecture will be given this year by Cesar Pelli, FAIA, AIA Gold Medallist, on November 20th at the Pelli-designed East Winter Garden, Canary Wharf. Drinks at 6.30pm will be followed by the lecture.

In keeping with the public benefit focus of this lecture, Mr Pelli will be considering Buildings and Ideas. He will be using examples from his own practice including Canary Wharf, the World Financial Center in New York City, the Petronas Towers in Kuala Lumpur, Malaysia, and Reagan Airport in Washington, D.C. to explore the various themes and ideas that generate his designs. Central to his practice is the principle of responding to the context of a building, as is his engagement with issues relating to sustainability and the use of new, unusual materials. He describes how "a building -

must be both background and foreground, it must have some exceptional qualities. But it must also try very hard to knit into the fabric."

AIA Gold Medal winner in 1995, Mr Pelli has become known as a master designer of public spaces, and as such, makes a significant contribution to contemporary urban life. Personally conceiving and directing the projects of Cesar Pelli and Associates, he continues to seek new solutions for each location, believing that buildings should be "responsible citizens".

His contribution to the development of Canary Wharf needs no reminding. As well as being the centre of commerce and home to several leading national newspaper groups, it is a London landmark and a hub of cultural and social activity that adds lustre to the fabric of

the city.

The lecture promises to be insightful and inspirational: a chance to appreciate and learn from the talent that produced amongst others, the world's tallest building - the Petronas Twin Towers, Founders Hall in Charlotte, North Carolina and the Winter Garden at the World Financial Centre in New York.

There is no cost to attend this exciting lecture, although attendees should RSVP to info@aiauk.org. We look forward to seeing you there!

For further contact details please refer to the bottom of page 8.

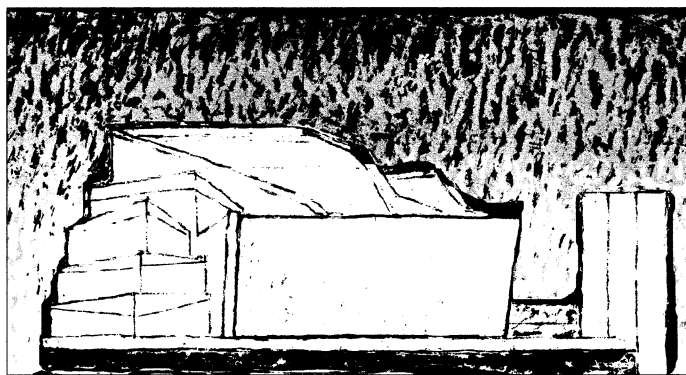
Lester Korzilius, the Chapter President and MJ Long AIA RIBA, a Chapter Director, joint organisers of 2003 Keynote Speaker event -

The Sketch

Born in 1926 in Tucuman, Argentina, Cesar Pelli emigrated to the USA in 1952. After completing his Masters at Harvard, he worked at the office of Eero Saarinen for 10 years, producing designs for the TWA Terminal Building at JFK Airport and the Maise and Stiles Colleges at Yale University. Subsequently, he was Director of Design at Daniel, Mann, Johnson and Mendenhall in Los Angeles, and finally a partner at Gruen Associates where he made his name designing the blue-glazed Pacific Design Centre, Los Angeles, among other acclaimed projects, before setting up Cesar Pelli and Associates in 1977.

We have the pleasure of a contribution from Mr. Pelli, a sketch in the second in the series of The Sketch by illustrious architects to appear quarterly in the AIA UK NEWS. This is his conceptual sketch of the Greater Miami Performing Arts Center.

The practice won the AIA Firm Award in 1989, and has won more than 100 awards for design excellence. Cesar Pelli, himself, received the AIA Gold Medal in 1995 and is a Fellow of the AIA. He is a former Dean of Yale School of Architecture, and is also the author of *Observations for Young Architects* (Monacelli Press 1999) that is a distillation of his thoughts on our profession. Not constrained by a personal style or signature, Mr Pelli always tries to celebrate the unique



characteristics of each project. In 1991, he was selected as one of the 10 most influential living American architects and has had numerous publications and exhibitions associated with his work.

He continues to run an 80 person practice in New Haven, Connecticut, and New York, carefully limiting the number of commissions the firm accepts to ensure a high degree of personal involvement.

Compiled by Gayle Markovitz MA, Copy Editor, AIA UK NEWS.

m|a|c|e

Mace Limited

Atelier House · 64 Pratt Street · London NW1 0LF · United Kingdom

telephone 44 (0)20 7554 8000 · fax 44 (0)20 7554 8111 · website www.mace.co.uk

A Corporate Partner of AIA-London/UK

Summer Gala at the London Tower Bridge



M Deguzman

The AIA London/UK Summer Gala is now an annual tradition. It gives chapter members and sponsors the opportunity to showcase their achievements – whilst also enhancing the AIA’s presence within London’s professional community.

On 18th July 2003, guests arrived at London’s historic Tower Bridge for this year’s summer event. The setting was reminiscent of past summer parties – where guests cruised down the River Thames on a chartered ship. Also situated on the river, Tower Bridge was the

backdrop for festivities, which started at dusk and lasted well into the evening.

Guests enjoyed fine London summer weather, live music and dined with 360-degree views of the City and the West End in one of the United Kingdom’s most distinctive landmarks. As part of the Tower Bridge Experience, attendees were able to view models featuring the various designs considered for construction.

Long-time AIA London/UK chapter corporate partner, Herman Miller, kindly sponsored the event, and has done so for the past 6 years. The

renowned office furniture manufacturer continues its association with the London chapter of the AIA, for which we are most grateful.

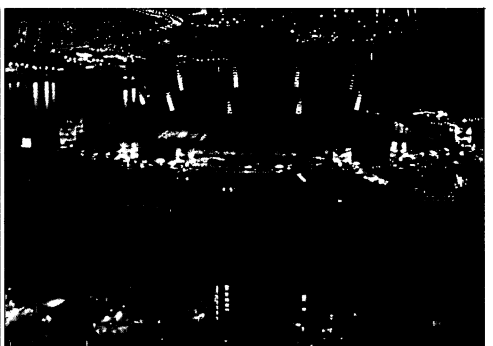
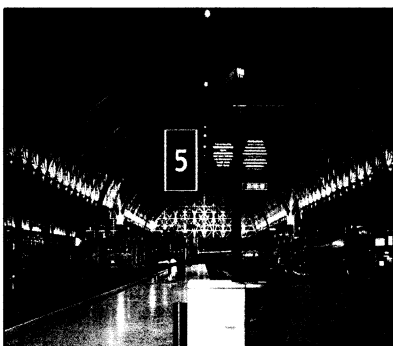
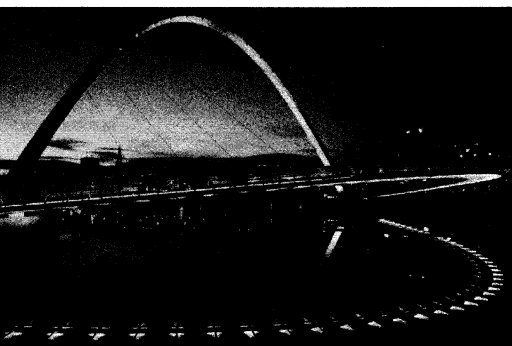
One of the highlights of the evening was the raffle, Chapter President Korzilius making final call for tickets – third photo below. Among the prizes was the recently launched Herman Miller Mirra chair, winner of the Gold Award at this year’s Neocon in Chicago presented by Mark Catchlove – second photo.

Compiled by Michael Deguzman, Chapter Executive, AIA London/UK.



M Deguzman - 1, 2, 3 & 4

Speirs & Major Lighting Seminar



G Peacock - 1, E Sumner - 2

M von Stemburg - 3

Jonathan Speirs, and Mark Major - left to right photos below - principals of lighting architects, Speirs and Major Associates, spoke to AIA members at their London office on 26 March 2003.

Asserting that good lighting is an essential ingredient to great architecture, they discussed the many sources of inspiration in their work, including theatre, film, art and of course architecture, but always citing people, and the way in which they interact with light, as their principle focus. The talk demonstrated several insightful lessons, including the notion that influences have a wide range of different inter-

pretations through light and a diverse portfolio of varied project types can lead to a healthy cross-fertilisation of ideas between genres. Finally, they also explained how the use of colour always has an idea behind it, and often belies a range of subtle white light schemes.

The talk was illustrated by an array of case studies, ranging from smaller jewel-like schemes such as IBM’s Ebii, HAL9000, newly refurbished Brunel’s Paddington Station - centre photo above - and several industrial light art projects, including the colourful illumination of a small substation in Edinburgh. Larger case studies focused on some older, iconic schemes such as Bluewater,

the Millennium Dome - photo right, lighting master plans for Cambridge and Coventry and the Burj Al Arab Tower (Dubai). Recently completed projects included the Stirling Prize winning Magna Science and Adventure Centre and Gateshead Millennium Bridge - photo left - and London’s Hungerford Bridge. Finally,



images of current work at St. Paul’s Cathedral and Terminal 5 Heathrow were shown.

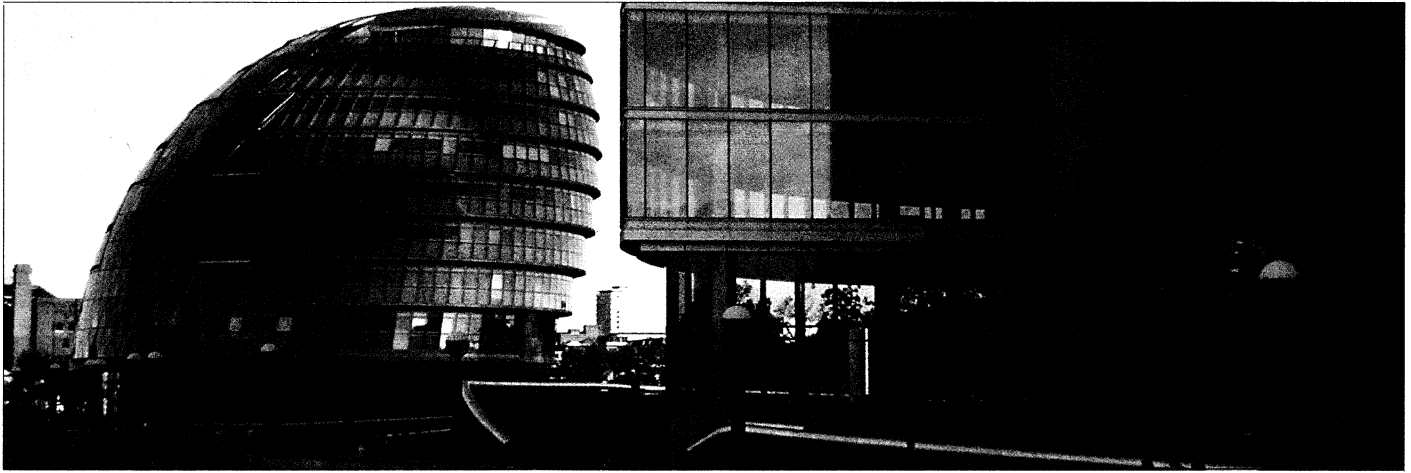


Herman Miller Limited

149 Tottenham Court Road · London W1T 7JA · England · United Kingdom
 telephone · 44 (0)20 7388 7331 · fax 44 (0)20 7387 3507 · website <http://www.hmeurope.com>

A Corporate Partner of AIA-London/UK

2003 Student Charrette



H Goforth

Every autumn the AIA London/UK organises a one-day Design Charrette open to architecture students and professionals in the U.K. Student teams compete to design a brilliant scheme in about six hours. The topic for this year's event is "Afloat on the Thames". The design could be a floating museum, a performance art stage or other piece of civic architecture. The topic conjures up associations with bridges, pontoons and boats.

The charrette will take place on Saturday, the 18th of October from 9:00 AM TO 6:00 PM at MoreLondon adjacent to the new Greater London City Hall, designed by AIA Gold Medallist, Lord Norman Foster FAIA RIBA, near Tower Bridge – see maps below.

A professional architect who will provide inspiration and guidance will lead each team of students. Team leaders include Roger Kallman Associate AIA, a founding director of the Chapter and Director of SOM/London, Max Neal RIBA, the project architect of London City Hall, Sean Affleck RIBA of Foster & Partners, Edgar Gonzalez RIBA of Brisac Gonzalez and Clarissa Matthews RIBA of Ian Ritchie Architects. Structural engineer David Glover CEng, Director of Ove Arup & Partners, will assist all teams with engineering design.

At the end of the day a jury chaired by Paul Finch Hon. FRIBA of CABE and Architects' Journal will determine the winners of first, second and third place who will be announced at a

drinks reception and will receive prizes.

Call Print, who have sponsored the charrette for many years, will provide reprographics services and model making materials. Students who have participated in previous years found the charrette to be great fun, and some have been able to persuade their schools to give academic credits. Professional architects who participate will also receive Continuing Education credits. Architects licensed in the U.S. will receive 6 CE credits, including HSW.

Fees are £5 for students and £10 for professionals, payable on the day. To register, please contact Michael Deguzman at AIA London/UK Telephone/fax: 020 7930 9124 or e-mail him at chapterexecutive@aiauk.org.

Bea Sennewald AIA and Kevin Flanagan AIA, Joint organisers in Charge of 2003 AIA London/UK Design Charrette.



AFLOAT

ON THE THAMES

DESIGN A FLOATING museum performance art stage or other public amenity ON THE THAMES

Design Charrette 2003

Open to UK Architecture Students and Practising Architects
A juried design competition with prizes for the three best designs

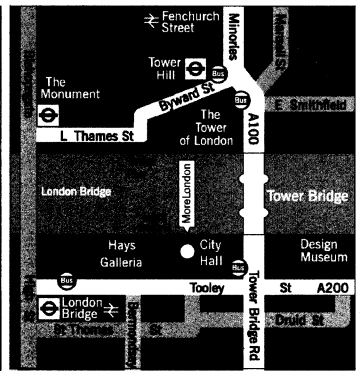
For more information and registration contact:

AIA London/UK
Ben Franklin House
36 Craven Street
London WC2N 3NF

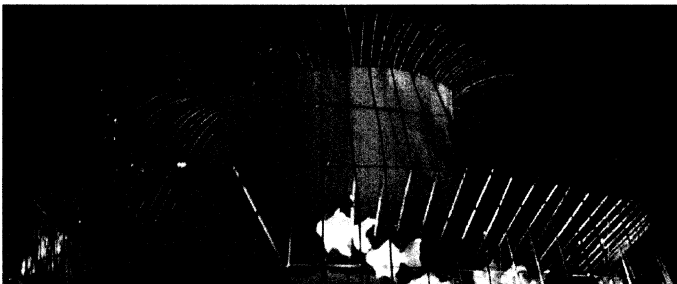
Charrette Venue:

GLA
London City Hall
The Pavilion More London
Queen's Walk
Tower Bridge

AIA London/UK
Call Print



AIA Hong Kong



Courtesy of AIA Hong Kong

AIA Hong Kong is planning a long weekend of educational seminars in conjunction with the visit to Hong Kong by Norman Strong (Director, AIA Northwest and Pacific Region) on October 16 - 19, 2003. Events kick off with Norman Strong's presentation to the

Chapter at our 3rd quarterly meeting on Thursday October 16, and continue with three brown bag seminars concerning the environment on October 17. The weekend concludes with historic and contemporary building tours on Saturday October 18, which will provide our members with an opportunity to earn up to 8 LU's over one short period.

Finally, AIA Hong Kong has agreed to host the 2006 Northwest and Pacific Region Convention. The wheels are in motion to make this a memorable event for AIA members from around the world. We look forward to welcoming all of you to Hong Kong!

The world's largest lantern was designed by our AIA Hong Kong President, William Lim, for the Mid Autumn Lantern Festival held in Victoria Park. There were over one hundred thousand people at the Festival over the long holiday weekend who were able to admire it.

CORRECTION: Thompson Penney FAIA, President of the AIA was awarded the Royal Australian Institute of Architects' Honorary Fellowship after, not before the AIA Convention in San Diego as suggested in "AIA RIBA Summit" page 3 of AIA UK NEWS Number 39, June 2003. Paul Hyatt, the departing President of the RIBA and his wife were not at the dinner hosted by the AIA London/UK, contrary to the notes therein.



Call Print

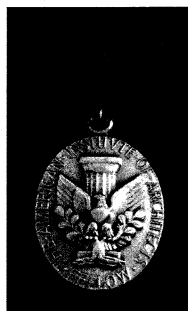
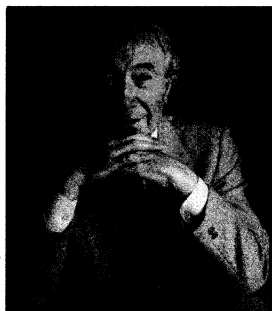
163 - 169 Great Portland Street · London W1N 5SD · England · United Kingdom
telephone 44 (0)20 7580 7122 · fax 44 (0)20 7580 7083 · website www.callprint.co.uk

A Corporate Partner of AIA London/UK

Sir George Grenfell Baines · 1908 - 2003

In Memoriam

Courtesy of B D P - 1 & 3, of AIA - 2



Honorary AIA Fellow Sir George Grenfell Baines has died at the great age of 95. GG, as he was always known to his firm, was recognised by the Institute in 1982 as "the father of British multi-discipline practice and of the 'teaching practice' concept" – above photo with AIA President Robert M. Lawrence FAIA on the right at the Investiture of Fellows at the 1982 AIA National Convention in Honolulu, Hawaii. He became known in the US after travelling and lecturing there in the 1970s. He was made a preceptor of Rice University, where he met Walter Gropius who reportedly said "you have done what I wanted to do at the Bauhaus".

George Grenfell Baines was born in 1908 in

Preston, the county town of Lancashire in the northwest. With no family professional background, he entered architecture in his late 20s after initially training with tradesmen and surveyors. He quickly established a practice that involved all construction professions and worked in partnership with constructors, believing that all could contribute equally. In 1961 this became Building Design Partnership and grew to be the largest A/E practice in the UK, a concept which remained the exception not the rule.

He led BDP until 1974, creating a firm with countrywide offices, and with a broad base of specialisms and specialists. As Vice President

of the RIBA, he instituted the Plan of Work¹, which has remained in tact and is only now being reviewed. He then moved into academia, becoming head of the University of Sheffield School of Architecture and forming a teaching practice to combine apprenticeship with academic learning, similar to the medical model of education, since he saw architecture as the most practical of subjects.

He was a very approachable, hugely enthusiastic man who generated devoted followers. Knighted in 1978, he was a leader who shared, bestowing his firm to his successors and instigating a teamwork ethos, which continues in his practice nearly 30 years after he handed over to us.

The service will be held on 4 November at 11.00 am in The Priory Church of St Bartholomew the Great, Smithfield and will be followed by refreshments in BDP's London office at 16 Brewhouse Yard, Clerkenwell, London EC1V 4LJ. If you wish to attend please contact BDP on hm-moorhouse@bdp.co.uk or 020 7812 8000.

Richard Saxon CBE RIBA, Director, Past Chairman, Building Design Partnership.

Number 40

Contents

September 2003

Benjamin Franklin House - AIA London/UK, p 1 · From the President, p 2 · From AIA National, p 2 · Hellman Cartoon, p 2 · Benjamin Franklin at 36 Craven Street, p 3 · Franklin House Workshop, p 3 · Continuing Education System (CES) Update, p 4 · National Portrait Gallery Tour, p 4 · BBC White City Project Tour, p 4 · Cesar Pelli Keynote Speaker at Canary Wharf, p 5 · The Sketch, p 5 · 2003 Summer Gala at the London Tower Bridge, p 6 · Speirs & Major Lighting Seminar, p 6 · Student Charrette, p 7 · From AIA · Hong Kong, p 7 · Sir George Grenfell Baines - In Memoriam, p 8 · Contents, p 8 · AIA London/UK Officers, Directors, Editorial Staff, Contributors of articles, drawings and photographs. p 8

The United Kingdom Chapter of the American Institute of Architects

Officers

President · Lester Korzilius AIA RIBA **Vice President** · Michael Hardiman AIA **Treasurer** · Anderson Inge AIA **Secretary** · Lorraine King AIA
Chapter Executive · Michael Deguzman

Directors

James Baker FAIA · Kevin Flanagan AIA · Timothy Gale AIA · Tom Giannini AIA RIBA · Harry Goforth Jr. Int'l Associate AIA RIBA · C. Anderson Inge AIA
Lorraine King AIA · Lester Korzilius AIA RIBA · Jennifer Kyner AIA · Michael Lischer AIA RIBA · M. J. Long AIA RIBA · Stephan Reinke AIA RIBA
Robert Schmidt AIA · Kenneth Schwarz AIA · Bea Sennewald AIA RIBA · Hiko Takeda AIA RIBA · Yasin Visram Associate AIA · Claire Weldin AIA RIBA

AIA · UK · NEWS

AIA-UK-NEWS is a service provided by AIA members in the United Kingdom to the public, the profession and anyone interested in the activities of design by professionals who are working abroad. Notes to the Editor, suggestions, criticism, etc., are welcome. Submissions may be sent to the contacts noted herein. Typed material and images intended for publication must reach the Editorial Director by 14 November 2003. Appropriate submissions are edited and published as space and time permit and at the discretion of the AIA-London/UK Board of Directors. Copyright © 2003 AIA-London/UK. All rights reserved. When necessary, permission is granted by the copyright owner noted therein. Photocopies of any articles therein are only for personal and internal reference use. Information has been obtained by AIA-London/UK from sources believed to be reliable. However, because of the possibility of human or mechanical error by our sources, AIA-London/UK does not guarantee the accuracy, adequacy and completeness of any information, and it is not responsible for any errors and omissions therein nor for the results to be obtained from the use of such information for any damages resulting therefrom.

Editorial Director Hiko Takeda AIA RIBA · **Copy Editor** Gayle Markovitz · **Digital Editor** Stephen Yakeley AIA RIBA · **Photograph & Graphics Editor** Harry Goforth Int'l Associate AIA RIBA · **Historical Editor** Daniel Smith AIA RIBA · **Data Base Director** Michael Lischer AIA RIBA · **Photographers-at-Large** Michael Deguzman · Harry Goforth · Int'l Associate AIA RIBA · **Cartoonist** Louis Hellman MBE · **AIA National Correspondent** Elizabeth Casqueiro AIA

Article contributors: Marcia Balisciano · Elizabeth Casqueiro · Michael Deguzman · Harry Goforth · Anne Keigher · Lorraine King · Lester Korzilius · William Lim William Lim · Mark Major · Gayle Markovitz · Richard Saxon · Bea Sennewald · Hiko Takeda · **Photographs:** American Institute of Architects, Washington AIA Hong Kong · Harry Goforth · Michael Deguzman · Photos courtesy of Building Design Partnership (BDP) · Cesar Pelli Associates · Geoinformation Group Limited · Graeme Peacock · Morley von Sternburg · Edmund Sumner · Individual photographs by those named therein · **Cartoon:** Louis Hellman · **Drawings:** Courtesy of Alan Baxter Associates · Cesar Pelli · Donald Insall Associates Architects · Patrick Dillon Architect · Hiko Takeda.

AIA London/UK · Benjamin Franklin House · 36 Craven Street · London WC2N 5NF · England · United Kingdom

web-site www.aiauk.org · e-mail info@aiauk.org · telephone 44 (0)20 7930 9124 · fax 44 (0)20 7930 9124

