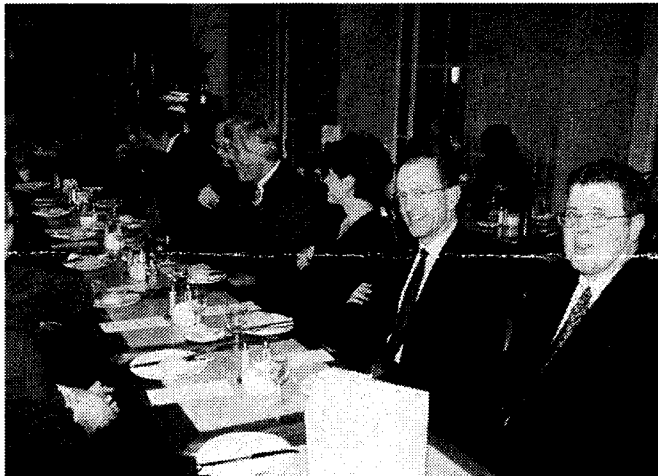
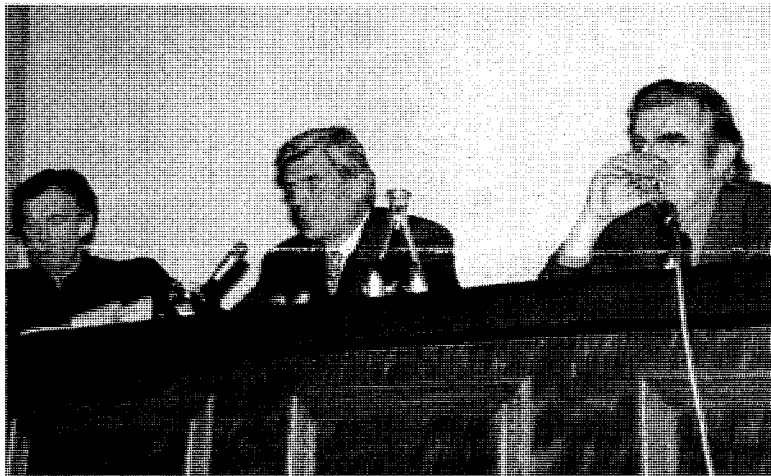


AIA/UK

Number 26

December 1998



Left: Charles Jencks, Fred Koetter, FAIA and Terry Farrell, Hon FAIA discuss urban theories at the RIBA/AIA Members Night

Right: From right to left: Ian Pritchard, International Director, RIBA, Robert Schmidt, AIA, President, Courtney Miller Bellairs, Assoc. AIA, Fred Koetter, FAIA, Stephen Yakeley, AIA, Susan Paylor and John Henry

Cultural Determination of Cities Defined at AIA/RIBA Seminar

"Why didn't you discuss what makes Paris Paris?" asked Charles Jencks of Fred Koetter, FAIA, and Terry Farrell, Hon. FAIA, RIBA, at the Urban Head to Head seminar at the RIBA members evening. The evening was jointly sponsored by the RIBA and the London/UK chapter of the AIA.

Terry had discussed urban development in the context of Hong Kong and London, reminding everyone through startling map images that populations of 6 or 7 million people use land very differently. Compared to Hong Kong, was London such a green city? he asked. He tried to compare Hong Kong to a US city, but wasn't able to find a defined city of similar size.

Fred had shown the American city as being generated as a refinement of the sectional gridding of western development. Section lines still dominate the landscape of the USA, he said, and are ingrained in the American consciousness.

Fred replied to Charles that towns that had originated from generic plans still produced non-generic local communities that in turn grew with the City Beautiful movement.

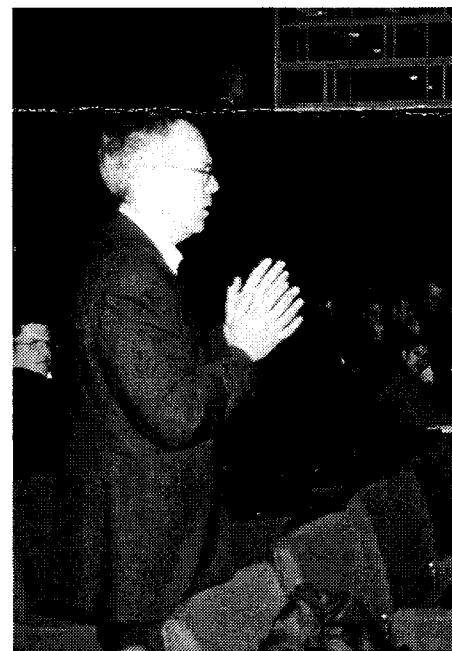
Terry added that one must go outside the culture to see how the city is influenced. London was not allowed to rebuild after the fire in any other form than as a collection of villages. Whereas Paris was created by superimposing the rational on the irrational.

Most successful big Asian cities, Terry said, benefit from a socialist infrastructure that is imposed at the beginning. "Totally superimposed on it is rampant capitalism—the ultimate collage. Cities do express their politics: Paris revolutionary, London evolutionary."

To which Fred asked, "Do we need cities?" We are now able to maintain economic viability without cities, he noted, although he found the idea bizarre to do away with them.

Rick Mather found Koetter's masterplan for part of Dallas interesting in that it reversed Paris by overlaying the city grid with irrational arteries.

Mather wondered what happens when the grids meet. Koetter did not answer the question directly, but explained that the natural plan was generated by Turtle Creek, which is the most valuable land in Dallas, and which he compared to Boston's emerald necklace. His design attempted to extend the green.



Above: Question Time. Rick Mather asks a question from the audience

New Officers to be Elected at January AGM

Chapter officers will be elected at the Annual General Meeting to be held Wednesday, January 6, 1999, at 6:30, at the offices of Kohn Pedersen Fox, 13 Langley Street, London WC2H.

The proposed slate of officers is:

Steven Steimer, AIA, President
Craig Colclasure, AIA, Vice president
Stephen Yakeley, AIA, Vice president
Lorraine King, AIA, Treasurer
The Secretary will be elected from among the full AIA members of the board at their first meeting.

Returning Directors nominated for the next year are: Robert Schmidt, AIA; Jonathan Dinnewell, AIA; Michael Lischer, AIA; Courtney Miller Bellairs, Assoc. AIA; Chris Colbourne, Assoc. AIA; and Noel Hill, Assoc. AIA.

New Directors nominated for 1999 are: Lester Korzilius, AIA; Jennifer Kyner, AIA; Timothy Gale, AIA; Dan Smith, AIA; David Leventhal, AIA; and Morgan Whitehead, Assoc. AIA.

The board will elect committee chairs at their first meeting. Anyone wishing to chair or to work on a committee should contact Bob Schmidt by e-mail at Robert.Schmidt@SOM.com or by phone at 0171-930-9711.

At this time the nominating committee is still looking for a student representative to serve on the board of directors.

Meet the New Nominees:

S. Morgan Whitehead, Assoc. AIA

Morgan received her Bachelors of Architecture from the University of Cincinnati, and is an Associate AIA member. Since graduation she has devoted her time to working and travelling. In Los Angeles, she was responsible for graphics at Hilton & Hyland. Hong Kong saw her working for RTKL International.

Morgan moved to London in September 1997 to join RTKL's London office. Since joining she has taken responsibility for delivering projects for one of RTKL's key clients and she leads the office Continuing Professional Development effort. Morgan is currently

working towards NCARB certification and registration in the US.

Lester Korzilius, AIA

Lester is a registered architect in England and the US (NY, CA, NJ) and holds NCARB certification. Since 1997 he has been associated with Foster and Partners where he is responsible for a new office building in the City. Until its suspension, he was the project architect for the LIFFE headquarters in London.

From 1988 to 1997 Lester was in private practice in New York. He was chair of the AIA/New York Professional Practice committee, and co-chaired a task force that negotiated procurement practices with the City of New York. For this work Lester received the AIA New York Rutkin's award for service to the profession.

Before 1988 Lester worked in the offices of Edward Larrabee Barnes, Arthur Erickson, John Lautner, Paul Rudolph, and Rafael Vinoly in the United States, and with Herman Hertzberger in Holland and the Richard Rogers Partnership in England.

Lester holds an MSc in Project Management from the University of Reading and is currently working towards an MA in Architectural Design and Theory at Kingston University.

Jennifer Kyner, AIA

Jennifer grew up in New York and received her architectural education at the University of Virginia. She was formerly an associate at Brennan Beer Gorman/Architects where she worked for eight years in the Washington, DC office. Her projects there include a child care centre, sound recording studio, hospitality work and speculative office buildings. Jennifer moved to London in 1997 to join Gensler.

Tim Gale, AIA

Currently a Project Manager in the London office of Skidmore, Owings & Merrill, Tim's 27 years experience in architectural practice has ranged from very large commercial to residential projects, and includes seven years as a sole practitioner.

As a generalist he has gained Architectural Registration in the USA and Hong Kong, a Civil Engineering degree from London University, a Builders Licence in Massachusetts. He believes that breadth of experience is

important as a representative of Members interests on the AIA Board of Directors.

David M. Leventhal, AIA,

David Leventhal is a Senior Partner of Kohn Pederson Fox Associated PC and is Partner-in-Charge of Design for the London office. A member of the firm for 18 years, he had been the designer of numerous offices, institutional, master plan, and residential schemes.

In Brussels he is working on the design of the Martini Tower, a low-energy high-rise building which includes a thermally sensitive wall and wind generators.

David received his Bachelor of Arts and Master of Architecture degrees from Harvard University. He has exhibited and lectured at the Chicago Architectural Center, the University of Delft, the Royal Academy in London, and Harvard University. He is also a member of the Collections Committee of the Fog Art Museum at Harvard.

Daniel H. Smith, AIA

Dan has worked in London for 10 years although he originally intended to stay for only a year or two. Born in New York City, raised in India, he began work in India for a French architect at the age of 12. He earned architecture degrees from the University of Texas and the University of California, Berkeley. Dan worked for firms in Texas, California and New York before beginning to practice on his own in Pondicherry, India. He formed Smith Lance Larcade & Bechtol Architects Limited in London in 1993. He has worked on hotels, shopping centres and housing in the UK and Europe.

Something to Build On

An exhibition using architecture as its starting point has been devised to reiterate the relationship of fine art with the built environment. The show will open mid-January and include the work of Courtney Miller, Assoc. AIA, Nicholas Hutcheson, Carmel Fenlon, Helena Ben-Zenou and Lawrence Hart.

The preview is Saturday, January 16, from 6-8 at the Stroud House Gallery, Station Road, Stroud, Glos. GL5 3AP. Contact Lyn Ames Collman on 01453-750-575 (tel and fax) for further information. The show continues until Sat., 13 Feb. and the gallery is open 10:30-5 Tuesday through Saturday.

Charette Studies Pedestrian Links

It is 1990, and as part of a continuing programme to create a pedestrian and cycle network in the London Docklands regeneration area, the London Docklands Development Corporation has invited you to design a public link. Their request is to have a solution that will encourage people to cross the West India Dock North from Canary Wharf to West India Quay with its fine Grade II-listed warehouses.

With that brief, students from all over the UK developed a variety of schemes at the AIA/Call Print Charette.

The jury spokesman was Paul Finch, editor of the Architects' Journal. Chris Wilkinson, Bob Phelan, Cedric Price and Norman Krangel formed the rest of the jury.

The winning team was led by Bob Brown of the University of East London and included Evdoxia Giovannopoulou, Chrissa Skiada, Damion Gray, Paul Saltmarsh and Jens Hede. The design focussed on contrasting certainty with uncertainty. Their scheme asked people to find new routes across the water, so that each trip would be different. This contrasted nicely, according to the jury, with the absolute forms of architecture that are present on Canary Wharf. The scheme was commended for producing elements of surprise without rigidity.

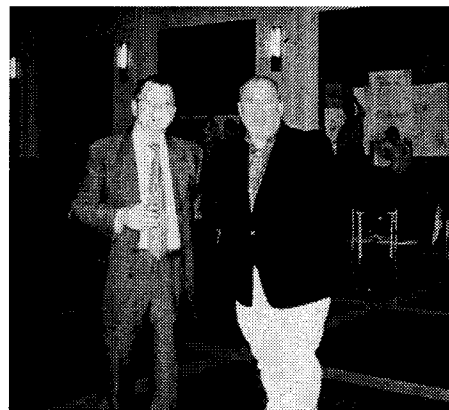
John Onken's team produced "The Squidge," a concept the jury found poetically simple. It offered a temporary non-threatening relation to the water. The jury thought that it wouldn't take much to develop the sheets into a design. "A lovely one-liner," was one comment.

Tim Gale's team created "East Enders," deemed a "heroic attempt" to include the neighbourhoods. The jury liked the scale of ambition to connect the boroughs as well as the scale of the design.

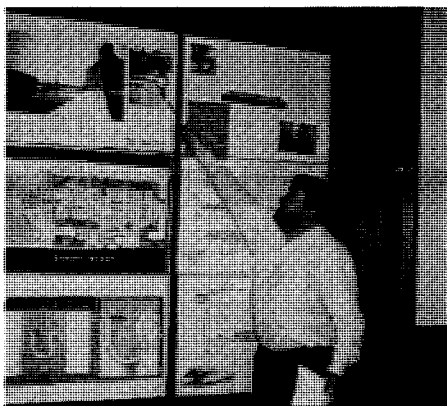
Another team created a lost lagoon that was also regarded as "strong and ambitious". It was applauded for upgrading the character from docks to lagoons, and for raising the question of whether it is possible to "plan in" Soho into warehouses.



Left: Dan Smith sketches with his team



Right: Steve Jolly and Norman Krangel of Callprint, sponsors of the Charette



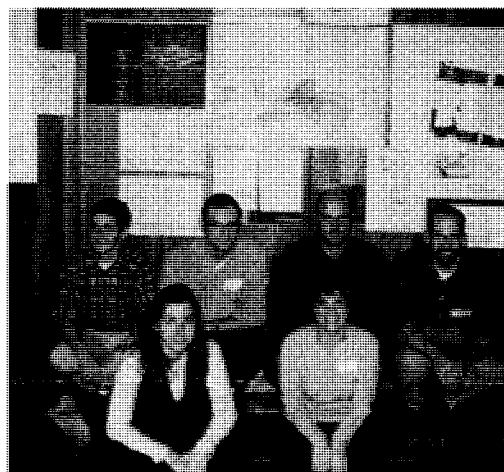
Left: Paul Finch examines the Squidge and gives the jury's summation



Right: Left to right: Chrysanthi Staikopoulou, Courtney Miller Bellairs, Mark from Newcastle, Geoffrey Kavanagh and Sira Warneke develop a scheme



Left: Cedric Price, juror, speaks with Jens Randecker, Student Director and one of the organisers of the event



Right: The Winning Team.



Left: Jury listens to a presentation of one of the schemes. Seated left to right are Bob Phelan, Norman Krangel, Chris Wilkinson, Paul Finch and Cedric Price

1999 Scholarships Available for Post-Graduates and Professionals

The **AIA/AAF Scholarship for Advanced Study and Research** supports study and research by those who have already earned a professional degree. Awards are based on the merits of a project proposal; they are not given for tuition assistance for an advanced degree. Awards generally range from a \$1,000 to \$2,500.

Applicants must be pursuing an advanced degree or conducting research under the direction of a US university.

The deadline for applications is 16 February 1999. Contact AAF at: (202) 626 7565.

AIA/AHA Graduate Fellowship: The AIA and the American Hospital Association can sponsor two or more graduate fellowships, total amount not to exceed \$22,000. Fellowships are available in three areas:

- For graduate study in an architectural school that can associate with nearby healthcare organisations
- Independent research for design in the health facilities field, to be completed within one year

- Travel with in-residence research at selected healthcare organisations to be completed within one year.

Applicants must be US or Canadian citizens. Applications are due January 15th 1999. Contact the Director, AIA/AAF Scholarship Programs (202) 626 7511.

Richard Morris Hunt Fellowship, co-sponsored by the AAF and Friends of Vieilles Maisons Francaises, Inc., is awarded to architects pursuing a career in historic preservation. The fellowship will enable an American architect to study in France for six months. Contact (202) 626 7511.

AIA London/UK

The First International Chapter of the American Institute of Architects
26 Walpole Street, London SW3 4QS
Fax/messages 0171-730-8922 www.aiauk.org

Events

January 6: AGM, 6.30pm, KPF, 13 Langley Street, London, WC2. (See story on page 2)

Editors: Justine Kingham, Michael Lischer, Karen Whittle

Chapter membership information:

Michael Lischer, 0171-636-2006, fax 0171-636-1987
michael.lischer@hok.com

You are invited by the
AIA/London UK Chapter
to attend the
Presentation of
the Excellence in Design Awards
on Tuesday, January 26
at 6.30pm
at the Royal Society of Arts
8 John Adam Street, London WC2

No Charge
RSVP 0171 730 8922

 **herman miller**

franchi
International

Call Print

OTIS

AIA National Information & Assistance: 001-
Membership Services:
CES/Transcript Verification:
Library
Order Books (paper format)
Order Documents (electronic format)

202-626-7300
202-242-3837
800-605-8229
202-626-7492
800-365-2724
800-246-5030