

AIA UK

NEWS

Environmental Design Studied at Happold Seminar

NEWS

Garden Party A Success

PROFILE

Herman Miller, New Corporate Partner

NEWS

Design Awards Deadline is November 15

Number 14

October 1996



At the Republican Convention:

Left: Stuart Binstock, Vice President of Federal Affairs with Congressman Phil English (R-PA), co-sponsor of the AIA's Commercial Revitalization Tax Credit Act.

Right: Christine Windle and Binstock of AIA's Federal Affairs Staff flank retiring Senator Alan Simpson (R-WY).

AIA Friends Run for Office

As you mark your absentee ballot to vote in the upcoming US election, you may be interested in knowing which candidates have been responsive to your interests as an architect.

Stuart Binstock, Vice President of Federal Affairs for the AIA, identified 43 incumbents and challengers who have sympathetic views on issues affecting the architectural profession. The incumbents

may serve on important committees, such as the House's Transportation and Infrastructure or the Senate's Environment and Public Works, or they may have sponsored or voted for favourable legislation.

The list includes candidates that local AIA chapters have identified as being supportive. There are two architects and one landscape architect running for Congress. All have received contributions from ArchiPAC, the political action committee of the AIA.

CA: In the House, Sam Farr (D) is running from the 17th District, and Ron Packard (R) from the 48th.

CT: Rosa DeLauro (D) and Nancy Johnson (R) are seeking reelection from the 3rd and 6th districts respectively. Johnson serves on the Ways and Means committee.

FL: Clay Shaw (R) and Sandy Freedman (D) are running for House seats.

GA: Max Cleland (D) is running against the incumbent for a Senate seat.

IL: Ray LaHood (R) seeks reelection to the House.

KS: Bob Dole (R) has consistently supported architects for 20+ years. You know what he's running for. Judy Hancock (D) is running for the House seat from the 3rd district.

KY: Sen. Mitch McConnell (R) is up for reelection.

MD: In the House, Steny Hoyer (D) and Connie Morella (R) seek reelection.

(Cont. page 2, middle)

Message from the President

I hope you noticed that this issue of the newsletter has a new look and feel to it! In our efforts to improve services and raise the profile of the Chapter, the Board felt the time had come to upgrade the quality of the newsletter.

I think the result is well worth the effort, and we appreciate the support of Callprint in helping to achieve this new level of quality.

Our Corporate Partnership Programme is gathering momentum with two new members. I am excited to welcome Callprint and Otis Plc., to our Chapter. I would particularly like to thank Steve Jolly and Erin Brau from Callprint and Otis for their help.

Including Herman Miller, we now have three of our goal of four Corporate Partners. The Partnership Programme formalises these companies' support for our Chapter and helps us develop closer relationships with industry.

Please mark Saturday, October 26 on your calendars. I hope to see you at the Design Charrette at New Zealand House.

Please note the starting time of the event is 9.30, not 8.30, as originally indicated. This should give more of us a chance of arriving on time! See you at New Zealand House.



Call for Design Award Entries

The deadline for submitting entries to the Excellence in Design Awards programme is November 15th. Details of the competition are enclosed with this newsletter.

This is the third annual competition that the Chapter has sponsored with the support of Otis Plc.

As before, all projects done by European architects or in Europe are eligible.

AIA Friends Run for Office cont.

MT: Sen. Max Baucus (D) is up for reelection.

MI: Vernon Ehlers (R) seeks reelection to the House.

MN: Bill Luther (D) is running for reelection to the House.

NC: Harvey Gantt (D), an architect, is running for the Senate, and Bobby Etheridge (D) and Sue Myrick (R) is running for the House.

NE: Doug Bereuter (R) seeks reelection to the House.

NH: Dick Swett (D), an architect, is running for the Senate.

NJ: Jim Saxton (R) and Frank Pallone (D) want to hold onto their House seats.

NY: Reps. Carolyn Maloney (D), Susan Molinari (R), Rick Lazio (R), Sherwood Boehlert (R) and Jack Quinn (R) and Sen. Alfonse D'Amato (R) are up for reelection.

OR: Earl Blumenauer (D) seeks the House seat from the 3rd district.

PA: Phil English (R) and Bob Borski (D) seek reelection to the House.

RI: Robert Weygand (D), a landscape architect, is running for the House.

SC: Sen. Strom Thurmond (R) and Rep. Floyd Spence (R) seek reelection.

SD: Tim Johnson (D) is running for the Senate and Rick Weiland (D) for the House.

TX: Ruben Hinojosa (D) is running for his first term in

the House and Rep. Gene Green (D) is running for reelection.

VA: Sen. John Warner (R) and Rep. Tom Davis (R) seek additional terms.

WV: Bob Wise (D) seeks reelection to the House.

WI: Tom Petri (R) is running for reelection to the House.

If you are registered but still need a ballot, try the non-partisan website on the internet: www.xballot.org.

FEATURE

Happold gives Environmental Design Seminar

The Chapter recently hosted a Continuing Education Seminar entitled *Environmental Design, The Past and the Future*. Our guest speakers were from the Bath and London offices of Buro Happold, Consulting Engineers.

The practice was established in 1976 and offers complete engineering services to clients throughout the World.

The evening's presentation and discussion focused on four major topics: mechanical ventilation systems and exterior wall design; natural day-lighting; use of new building materials; and pollution mitigation measures.

The firm's experience was illustrated by recent building projects, while analysis diagrams, current design drawings and models suggested ideas for the future.

Throughout their work Buro Happold has sought to provide unique solutions to the

concerns of environmental design while maintaining the architects' design intent, and most importantly, meeting the needs of the occupants. This balance has led to innovation solutions and all attendees of the seminar will, no doubt, think more carefully about this aspect of their work in the future.

Call for Nominations

The term of office of the present Chapter officers will end in January, and it is time

to look for candidates for 1997's Board.

Please send nominations for President, Vice Presidents, Secretary, Treasurer, Board members and Committee Chairs to:

David Walker
Swanke Hayden Connell Architects
12A Finsbury Square
London EC2A 1AS

Call David on 0171-374-4371 or send a fax to 0171-374-0506. Nominations are due December 1st.

NEWS

Projects Sought to Publish

Anja Seehrich-Caldwell, International Assoc. AIA (European chapter) and Associate Editor of **aw** (architektur + wettbewerbe), is looking for AIA members interested in publishing some of their work in the magazine.

The deadline is March 1 for the June issue on solar architecture, June 1 for the September issue on Row and Town Houses, and

September 15 for the December issue on Schools.

Send a short description or photographs of the project to her at Schulze-Deiltzsch-Strasse 15, D-70565 Stuttgart. Her telephone is (49 711) 78490-17, and fax is (49 711) 78496-20.

She is also working on a book entitled "Starter Homes," about low-budget, single family structures for first-time buyers. Material should be sent to her office at Seilerstr. 7, 70372 Stuttgart.

The Seoul Man Writes

Lawrence Kim, student Board Member, has moved to Fukuoka, Island of Kyushu, Japan, where he is now an associate for Kankyo Design Kikoh, an architecture and design firm.

"Fukuoka remains a designer's visual delight. Although the city's population of a mere 1.2 million is only a tenth of that of Seoul, the city embodies an energy that is exciting in its own right. It

manages to retain some of its Asian charms as well."

"So far, I've come across three architectural projects of great interest: Il Palazzo (Aldo Rossi, 1991), ACROS (Emilio Ambasz, 1994), and Canal City (Jon Jerde, 1996)."

Kim recently won third prize in the first Architectural Photography Competition sponsored by the Korean Institute of Architects. The photo entitled, "Lightscape," is of a sun-filled interior at the College of Music near Le Parc de La Villette in Paris.

NEWS

Chapter to Offer Fall Tour of London

The London/UK Chapter in association with the National AIA and Rudow Travel Agency will sponsor a tour of London for 70 architects September 15-22. It is expected that participants will arrive from the east coast of the USA and spend a week visiting a variety of current and recent commissions in London. The tour will include visits to modern work, such as the Docklands and Canary Wharf and the additions to

the Tate, The National Gallery and the Royal Academy, as well as contemporary commissions on traditional buildings, such as the Globe Theatre and the Westminster Abbey restorations.

The Chapter will host the visitors at a cocktail reception at the Reform Club on Tuesday, September 16th at 6:30. Contact Justine Kingham at 0171-730-9122 for more information.

Your Favourite Places

In conjunction with the tour of London, the Chapter is going to write a small handbook for visitors. Bob Schmidt will pattern an "Architects Guide to London" after the SOM guide to Chicago, one of the most critical and succinct pocket guides any visitor could hope to use to see Chicago.

The success of such guides, however, depends on personal, opinionated tips on

what you REALLY like about London.

Schmidt is looking for two areas of information for the guide. He would like the practical, such as special public places, the best shops and best restaurants for food and design; and the aesthetic, such as the best place to see the Thames, or the best view of Hampstead Heath.

Please fax your ideas to Schmidt at 0171-930-9108 as soon as you can.

NEWS

Solar Energy Competition Offered to Students

The Korean Solar Energy Society (KSES) and the International Solar Energy Society (ISES) are sponsoring an international student design competition for the Kyongju High Speed Railway Station.

The theme places a high tech railway station to be operated by solar power in a classical ancient city of Korea.

Architecture students worldwide may enter individually or in groups. Work must be done under the direction of a faculty advisor.

Submissions are to be principally the product of work done in a design studio. Faculty advisors must complete and return a registration form before March 1st.

The grand prize is \$3,000 plus travel for two to Korea; the first prize winner receives \$2,000 plus travel for two. Two second prizes will be

made of \$1,000 each, and there may be four honourable mentions, each receiving \$500.

Winning projects will be exhibited in Seoul, and a summary book of the competition will be published and distributed internationally.

Contact Moo-Yong Bldg. 604-1 Yoksam-dong, Kangnam-gu Seoul, Korea. Telephone, 82-2-569-2478; fax 82-2-569-2466; email, phseye@nuri.net.

Busy Fall

Stephan C. Reinke has joined Hellmuth, Obata and Kassabaum as Director of Project Development for the London office.

This follows after, but was probably unrelated to, his earlier appointment in October as Vice Chair of the AIA International Advisory Group. Congratulations on both counts.



AIA London/UK

The First International Chapter of the American Institute of Architecture

THE THIRD ANNUAL AIA LONDON/UK EXCELLENCE IN DESIGN AWARDS

This Awards Programme recognises and honours excellence in architectural projects anywhere in the world designed by European based architects, and projects by architects throughout the world designed for Europe.

November 15, 1996 Submission Deadline Date

December 3, 1996 Awards Gala

ELIGIBILITY

- Structures or buildings (or groups of either) of any type (including rehabilitation, interior design, monuments etc.) built or unbuilt, anywhere in the world by European based architects.
- Architects anywhere in the world are eligible to submit any project designed for or built in Europe.
- Architecture students may submit studio projects, provided they are currently enrolled in an architectural studies in the United Kingdom.
- Projects must have been designed after January 1 1994.
- Any eligible student, architect or practice may submit any number of eligible entries provided each is submitted separately with the appropriate fees for each

THE JURY

The International Jury:

Mr Ian Ritchie (Awards Gala Guest Speaker)
Architect, Ian Ritchie Architects

Mr Pierre Baillargeon AIA
Architect, Hellmuth Obata & Kassabaum

Ms Gabrielle Bramante
Bramante Architects

Mr Nicholas Grimshaw CBE Hon FAIA
Architect, Nicholas Grimshaw & Partners Ltd.

Mr J T Leingang
Managing Director, Otis Plc

Michael Lischer AIA
AIA London/UK Chapter President

Monica Pidgeon Hon FAIA
Pidgeon Audio Visual

CRITERION

The sole judging criterion is design excellence. The Jury is empowered to define the extent to which excellence is determined by aesthetic, social and functional characteristics. The Jury may elect to honour projects by building type or may honour projects without making any such distinctions.

SUBMISSIONS

The Jury's decisions will be based on the materials submitted. No field trips will be taken. All submissions should conform to the following format, enclosed in a flat binder of A4 size.

A typed outline, one page or less, describing the project brief, its location, function, type of client, surface area, approximate value in construction cost, cost per square metre and other relevant facts.

SUBMISSIONS

A typed outline, one page or less explaining the design solution, construction materials, building components, energy strategy and other appropriate information.

Drawings, on no more than 10 A4 sheets, may include:

Site plan

Plan(s)

Section(s)

Elevations

Selected details, if desired

For built projects; Photographs (not slides) of the projects exterior and interior, showing building context, for restoration projects, also include up to three photographs of the original structure.

For unbuilt projects; Model photographs (not slides) axonometrics or perspectives, of exterior and interior, and showing building context.

A stamped, self-addressed envelope adequate to return your project at the conclusion of the awards programme

The intent of these specifications is not to restrict entrants to a rigid format, but rather to provide Jurors with comparable, comprehensive, and easily handled materials to review. Entrants will not be eliminated from consideration because of a deviation from the above format. There is no limit to the number of submissions.

DEADLINE

All submissions must reach the AIA London/UK at: Hellmuth, Obata & Kassabaum
Kent House
14-17 Market Place
London W1X 7J

prior to 2:00pm on Friday November 15 1996

IDENTITY OF PRACTICE

The name of the student, architect or practice must appear nowhere on the submission folder or presentation materials, but a sealed plain envelope must be attached to the back inside cover of the folder or binder, containing one sheet of your letterhead with typed identification of the project and full design and construction credits, listing project name, practice and client's name as you wish to see each on the award certificates. Please note also the name and daytime telephone number of the appropriate contact person at your practice for this submission.

ENTRY FEES

Each submission must be accompanied by a cheque payable to The American Institute of Architects, London/UK Chapter. The non-refundable fee for each submission for practising architects is £ 25 (\$40). The non-refundable fee for student entries is £ 5. This fee payment should be placed in a sealed envelope marked "Honour Awards Fee Payment" taped to the inside front cover of the submission folder. (all convertible currencies will be accepted in the equivalent £ British Pound Sterling or \$ US Dollar amount)

AWARDS

Following the Jury's selections, honourees will be contacted and invited to the awards ceremony. Award announcements will be made and certificates presented at the AIA London/UK Excellence in Design Awards Gala on the evening of December the 3rd at the Royal Society of Art featuring a lecture by **Mr Ian Ritchie**. Admission to the Awards Gala is free of charge. Award recipients will be notified in advance and invited to provide slides and exhibit boards of the projects honoured. Publication of the award-winning projects will be sought by the AIA London/UK Chapter.

RETURN OF MATERIAL

All materials submitted will be returned at the conclusion of the programme in the self-addressed and stamped envelopes provided by the entrants.

QUESTIONS?

Call or fax Stephan C Reinke AIA
Tel: 00 44 (0) 181 748 8088
Fax: 00 44 (0) 181 748 3475

ADDRESS FOR SUBMISSIONS

Mr Michael Lischer AIA
Chapter President AIA London/UK
Design Awards Program
Hellmuth, Obata & Kassabaum
Kent House
14-17 Market Place
London W1X 7AJ

PROFILE

Yakeley's Grand Tour Begins and Ends in London

Stephen Yakeley, AIA, RIBA, seems to know more about the US than most British architects do, one notices. The reason, one learns, is that, despite the accent, he was born and raised in the US.

He came to the UK in 1966 after graduating from architecture school to travel and see castles. Without money for a grand tour, he

decided to work his way around Europe. He interviewed in London, but went to Cambridge on a beautiful day in May, watched the punts on the River Cam, and decided that it was the most beautiful place in the world; he joined a small firm in Cambridge and stayed for two years.

He returned to the States to work for Charles Moore in New Haven, attend RPI, and work in California long enough to become licensed and to see the west coast. "It was a program of self-

education," says Yakeley. "I'm glad I did it".

Finding that he was simply happier in England, he returned to the UK as a partner with his former Cambridge firm.

In 1974, he started his own firm, Yakeley Associates. He has always worked as a sole practitioner with a staff of 20 to 40 people. He had an early "lucky break" when he was asked to design Wasia, Saudi Arabia, a large water-treatment plant and village of 1,000 workers and their

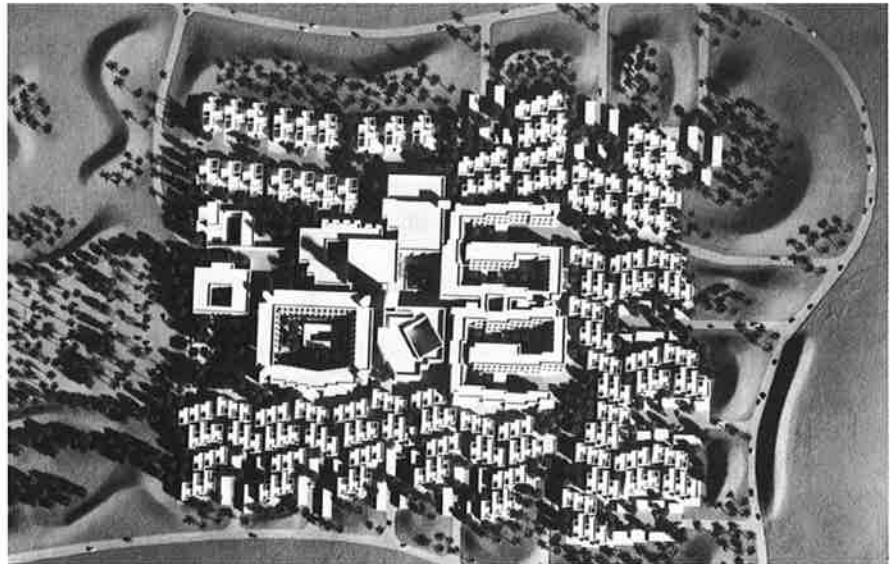
families in the Arabian desert. That took seven years to run, from preparing the master planning to selecting the furniture. He even named the town.

Other projects followed in the region, and Yakeley developed a substantial office in Saudi Arabia staffed from the UK until the 80's, when the oil price-freeze froze the funds. The effect of doing large projects (£150 million) has been to qualify the firm early in its development to do large projects.



Above: New office wing on research centre near Cambridge

Right: Wasia Village, Saudi Arabia



PROFILE cont.

In terms of the practicalities of practice, Yakeley is proud to have brought overlay drafting to UK, an experience that he wrote about for **Architects Journal**. He has also been an early advocate of using computers in production.

Again, a fortuitous commission--the design of law courts (£45 million)--allowed him to equip his entire office with AppleMacs so that work was done online immediately and simultaneously. "It was very successful", says Yakeley.

"It allows for a smaller office, as each chap does approximately twice as much drawing work as he would have done in the past."

Diana Yakeley, Professional Affiliate AIA and his wife, is an interior designer and an Associate in the architectural practice. She has her own interior design firm, Yakeley Associates Design.

Asked if he could predict the source of future work, Yakeley said, "I don't think you know. Just as you think you've got an expertise, no

one asks you to do that again. It often comes quite unexpectedly from quarters you never expect. One is able to do an enormous variety of projects." For now he is doing residential projects and housing in London.

Consultants Sought

Grupo Consultor de Infraestructuras (GCI) is a Spanish consulting firm concerned with planning, design and construction. They are looking to expand

their base of consultants in the fields of health and urban development. Their clients, such as the World Bank, Inter-American Development Bank, European Commission D.G. VIII, are interested in developing countries.

Consultancies vary in length from one week to several years. Architects interested in being considered should contact Fernando Navarro Bidegain, Grupo Consultor de Infraestructuras S.A., Espanoleto 20, 28010 Madrid.

PROFILE

Herman Miller London/UK Corporate Partner

Herman Miller Ltd., is a wholly-owned subsidiary of the US company. The UK firm has had an average growth in business of 35 per cent per year over the last five years. "Whereas in the UK generally, growth is four to five percent for contract office furniture," says Gill Parker, Marketing Manager for the UK, who is responsible for contacts with the

architectural community. She credits the firm's success to their ability to offer a wide range of well-designed furniture. Herman Miller recently acquired a German and Italian furniture line to complement their US products. They also manufacture some of their products in the UK, therefore, their metric ranges are better geared to the European market than one would expect from a US-based company.

The firm's design quality has been recognised at NEOCON where they won the "Best of

NEOCON" award for the Ambi chair in 1995 and again in 1996 for the Limerick chair. Both chairs will be introduced to the European market this month at Orgatec, the biennial furniture fair in Cologne.

Herman Miller has been in business in the UK for more than 25 years. In that time the firm has come to understand the differences in national work cultures.

Thomas Newhouse, Herman Miller's consultant designer, is a specialist in translating

such nuances into workable furniture groupings. He educates purchasers and specifiers at seminars, the next of which, "Where is your Office of the Future," will be held in London October 21st.

Other personnel from the UK office that Chapter members have come to know are Ian Laverick and Jeremy Hocking.

Laverick, Architectural and Design Account Manager, is assigned to particular practices and provides oversight of specific projects. (Cont. below).



Above: Ian Laverick and Gill Parker

Right: Aeron and Limerick chairs, both winners of "Best of NEOCON" awards, which were introduced at Orgatec this month.

NEWS

Welcome New Members

The Chapter would like to introduce readers to the following new colleagues:

Nigel Thompson, Principal Director of Ove Arup & Partners - Professional Affiliate.

Mark Broyles, AIA, Transfer from the Potomac Valley Chapter, Maryland.

Reciprocity is a Small Step Closer

Legislation creating the board that will have authority to grant reciprocity has been enacted. The Housing Grants, Construction and Regeneration Bill successfully passed both Houses of Parliament earlier this year and has now received the Royal Assent. It will come into effect on 1 April 1997.

It replaces the Architects Registration Board (ARCUK) with the Architects' Registra-

tion Board (ARB). The new body will have eight lay and seven architect members, the latter being chosen in a profession-wide election next month.

The RIBA nominated several lay people to the Department of the Environment, the body which will select the Board. The RIBA recommended a mixture of the 'good and the great' people from the construction industry. The only immediate effect on architects is that their subscription to ARB will be less than the current fee to ARCUK.

Hocking, SBG Manager of Europe, runs the strategic business group. When large projects such as the Ministry of Defence in Bristol, are undertaken, Hocking leads a team of Herman Miller people who work out the complexities of substantial orders.

Other projects that Herman Miller Ltd., completed with US practices in the UK are Chase Manhattan and Citibank with Swanke Hayden Connell, Walt Disney with KPF and 3COM with Studios.

PROFILE cont.

EVENTS

Oct 28: AIA/UK Design Charette, New Zealand House penthouse, Piccadilly, London, 9.00 for 9.30. John Onken, fax 0171-837-7575.

Nov 7: Reception for Thom Lowther, AIA Continuing Education Director, at Kohn Pedersen Fox, 6.45-8.00. No charge to chapter members. Karen Cook, 0171-836-6668, fax 0171-497-1175.

Nov 13-17: Sacred in the City, workshop in Seaside FL reviewing urban planning principles. \$1350 including tuition, travel allowance, four

nights hotel, lunches, dinners and workbook. 303-449-9808, fax 303-449-2201.

Nov 14: Funding London's Future, seminar at RIBA, 2-5.30, £25, Contact Noel Hill, 0171-435-2462.

AIAUK is printed courtesy of **Call Print**. Please contact them for all your printing needs:

W1 0171-580-7122
EC2 0171-729-0243
SE1 0171-633-9068



Above: Michael Lischer and friend enjoying the Bar-B-Que last August.

AIA UK

Number 14 October 1996

The newsletter of the London/UK Chapter of the American Institute of Architects.

Justine Kingham, Michael Lischer, David Walker, Stephan Reinke, Karen Whittle, Editors

For general enquiries, call Judy Nyquist 0171-349-0453. For membership, contact Lorraine King 0171-828-5860 (voice and fax).

AIALondon/UK

The First International Chapter of the American Institute of Architects
2 Carlyle Mansions, Cheyne Walk, London SW3 5LS
www.archinet.co.uk/aialondon/news.html

Corporate Partners:

 **herman miller**

Otis



NEWS

Garden Party Held in Holland Park

The third annual Garden Party proved to be the most popular event in the Chapter's history due in part to the convenient location and pleasant weather. 175 members and guests attended the party at the Orangery in August, a month when many of us were on vacation elsewhere. The Chapter was particularly honoured to have three past Presidents of the RIBA and UIA Councilor John Wright, RIBA, among the guests.

The event was sponsored by Herman Miller Ltd., the Chapter's first Corporate Partner. The firm has a tradition of supporting local AIA chapters, and London/UK is proud to continue the relationship.

A travelling exhibition depicting the history of the White House was displayed at the party. It is on loan to the Chapter from the American Architectural Foundation and will be shown at the Building Centre, London, again in the Autumn.

Right: Pictures from the Garden Party in Holland Park

